



THE LEADER IN INDUSTRIAL MAGNETIC FILTRATION

BE PART OF THE SOLUTION



Mission Statement

One Eye Industries Inc.

One Eye Industries (OEI) is the world leader in the design and production of Industrial Magnetic Filtration solutions. OEI's patented radial field Magnetic Filtration products remove over 96% of ferrous and also removes non-ferrous contaminants, ranging from submicron to 100+ microns in size. OEI filters replace or enhance traditional filtration in rotating equipment, engines, gearboxes, hydraulics and pneumatics; greatly reducing waste over a 15 year life span. Industry leaders in oil and gas, mining, manufacturing, transportation, food, pharmaceutical, chemical manufacturing, and marine industries employ OEI radial field magnetic filter systems and product in over 39 countries around the world. OEI Magnetic Filtration technology increases equipment reliability, reduces maintenance costs, and improves profitability for organizations. Finally, OEI products reduce a company's environmental foot print because they extend the life of every component linked to the OEI magnetic filtration product and reduce maintenance.

OEI filters are manufactured to exact standards at our production facility in Calgary, Alberta, Canada. In-house design and manufacturing enables the creation of custom filtration systems in response to your specialized needs.

Mission

One Eye Industries' mission is to innovatively design and manufacture the world's leading magnetic filtration solutions.

Vision

One Eye Industries' vision is to continue educating the world about the benefits of magnetic filtration, and to one day replace all traditional filtration with reusable, long-lasting, powerful magnetic filtration, providing better contaminant removal while reducing environmental impact around the globe.

The Legend of One Eye







The company name is based on the legend of a one-eyed grizzly bear who lived in the Kootenay region of British Columbia, Canada.

One dark night, during a raging wind storm, a large, voracious grizzly ripped the door off a hunter's camper. In self-defense, the terrified hunter shot at the raging bear, taking out the grizzly's eye. The hunter swore that the look in the bear's remaining eye was one of unrelenting revenge. The grizzly's roar silenced the wind as he disappeared into the darkness.

From that day forward, famous hunters and intrepid game wardens desperately searched every mountain and valley to find this dangerous, wounded bear. He was never caught. He anticipated every trap. He outsmarted his competition. He became the cunning phantom grizzly named One Eye leaving his enormous paw prints everywhere as a reminder of his prowess.

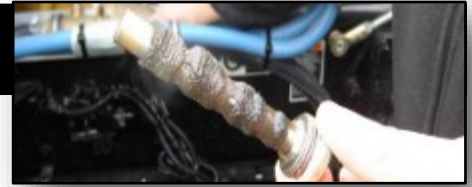
As time passed, the legend of One Eye grew just as the grizzly grew larger, more powerful, and more menacing every year. So potent is this legendary bear that even today, all of his offspring possess only one eye, and are the most powerful and dangerous grizzlies in the world! One Eye's intelligence, determination, and ability to beat the odds is the perfect signature for our company and our brand.

Table of Contents

	2	Mission Statement
	3	Table of Contents
	4	Sources of Contamination
	5	Non-Ferrous Contamination
	6	OEI Environmental Impact
	7	Distributor Order Form
	8	Magnetic Scrubbers
	16	High Pressure Scrubber
	17	Magnetic Y-Strainers
	20	ADD-Vantage 9000
	24	OEI MIT Filter
	25	ADV9000 Wash Station
	31	OEI Kidney Loops
	36	OEI Cooling/Cutting Systems
	37	OEI Fuel Coalescing Systems
	38	Food Grade Magnetic Scrubbers
	40	Food Grade and Industrial Grade Filtration
	41	Magnetic Filter Rods
	43	Magnetic Filter Plugs
	45	Specialty Rod and Plug Applications
	53	Magnetic Filter Pad
	54	Magnetic Filter Patch
	55	OEI Custom Kits

Contamination

Sources of Contamination



Airborne Contamination

These include poor quality air breathers, damaged seals and unprotected reservoirs.

New Lube Oils and Fluids

Lube oils, hydraulic and coolant fluids, grease and fuels are contaminated with fine ferrous metal under 10 microns to sub-micron levels. This contamination occurs as a result of the corrosion and erosion of the carbon steel pipes and reservoirs in the following processes:

- I. The crude oil extraction process from the well.
- II. Transportation to the refinery.
- III. The refining processes.
- IV. Delivery of the finished product to the end user.

New Equipment Components

New metal components of equipment are contaminated with metal due to the manufacturing process. These manufactured components are typically washed in parts washers that utilize a 40 micron bag filter. This filtration process allows fine metal contaminant under 10 microns to remain on the surface and in the pores of the equipment which is then assembled.

Break-In Wear

Once equipment is assembled and placed into service, break-in wear from the components is a critical source of wear metals. The hard wear metals score soft metal and non-metal components.

Engines

With the new tier 3 and 4 fuel requirements, existing dirty fuel must be cleaned to below 3 microns. If the fuel is not filtered to below 3 microns, this leads to inefficient combustion and blow-by of wear contamination into the lube oil.



Contaminant captured when an OEI Magnetic Scrubber was installed in a lube shed supply line to test new hydraulic fluid.

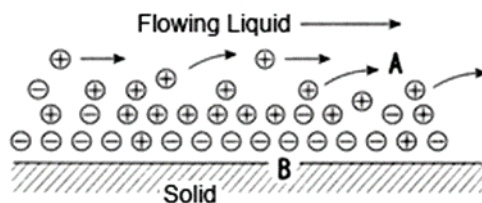
Contamination



How OEI Traps Non-Ferrous Contamination

Static Charge is one of the forces in play which aids OEI magnetic filtration technology in capturing non-ferrous material. Firstly, a force directly related to static electricity is **friction**. Friction can separate positive and negative charges ultimately generating static fields (flow electrification).

The **triboelectric** effect (also known as *triboelectric* charging) is a type of contact electrification in which certain materials become electrically charged after they come into frictional contact with a different material. Secondly, if **air bubbles** are present in the flow matter, they amplify the static electricity. Thirdly, liquid and gases which **flow over a solid** (pipelines, holding tanks, etc.) create a static charge as well.



“The overshadowing menace of all liquid organics (especially hydrocarbons) is the physical fact that they generate static electricity when in flow.”

Source: <http://www.machinerylubrication.com/Read/809/electrostatic-charge-hydrauli>

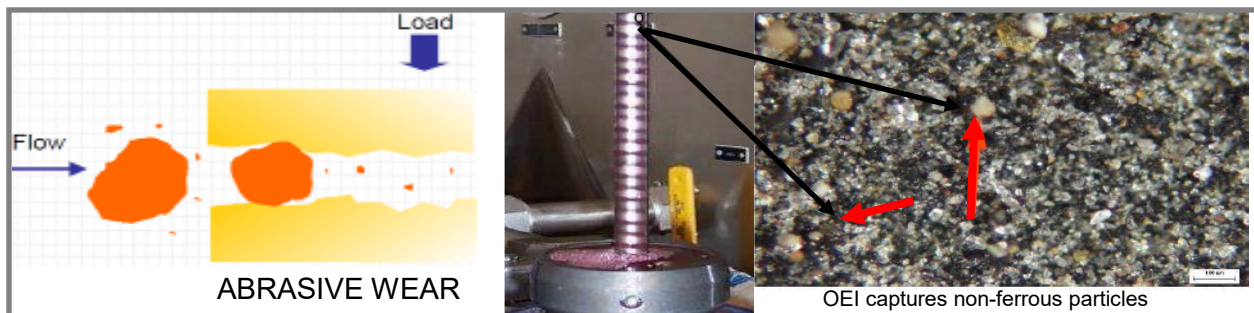
Other factors which create and affect static charge are:

- **High fluid velocities.**
- **Flow through filter elements and other microporous materials.**
- **Turbulence created by pumps, especially centrifugal pumps.**
- **Discharging onto the free surface of a reservoir.**

Embedding

Another way non-ferrous material is captured by magnetic filtration is through the process of embedding, and this occurs in more than one way. It occurs when particles of ferrous contamination get embedded into the non-ferrous particles within a system, i.e. a pipeline. Sulfur contamination in a pipeline can make contact with ferrous micron and submicron particles (the most dangerous particles); these then become a single contaminate. Also, ferrous material wears non-ferrous material (abrasive wear); for example, when oil is flowing through the bearings, micron and submicron ferrous particles gouge or score material such as copper or brass. These particles marry up and are trapped by the magnetic filter.

“The generation of ferrous contaminants in most hydraulic and lube systems due to both normal and abnormal wear is a fact of life.” Christian Bauer, Pall Corporation.






One Eye Industries continues to strive for product excellence and a key element of this excellence relates to the environmental accountability of its products. OEI's products offer its customers a responsible, environmental alternative to traditional filtration. The life of OEI magnetic filtration products is 15 + years; the parts are cleanable, reusable and recyclable. Because OEI magnetic filters are not throw away, they significantly decrease the amount of toxic materials entering landfills. Plus, OEI product cleans so efficiently, it extends the life of the fluids, reduces the consumption of the fluids and the disposal of dirty fluids. Furthermore, OEI filtration extends the life of all of the components associated with an OEI product, shrinking replacement footprints and diminishing landfill detritus. Finally, OEI's magnetic filtration does not require utilities to function. So join us, be part of the solution and help us filter the world into a better place!





1 PROJECT INFORMATION REQUIREMENTS

	OEI - Order Inquiry Form		
	REV. 3	DATE	PAGE 1 OF 1

2 PROBLEM / QUERY

3 TECHNICAL INFORMATION REQUIREMENTS

Operating Data			Design Data		
Operating Pressure:			Design Pressure:		
Operating Temperature:			Design Temperature:		
Maximum Flow Rate:			Redundancy:	Singlepass ¹	Multipass ²
Viscosity:			Vessel Connections		
Liquid Density:				Size [in]	Flange Class
Reservoir Size:			Inlet:		
Type of Port:			Outlet:		

Notes:

1. Singlepass: Fluid will pass through the magnetic filter once; ex. Transfer station
2. Multipass: Fluid will pass through the magnetic filter multiple times; ex. Lube system, Kidney Loop

Magnetic Scrubbers

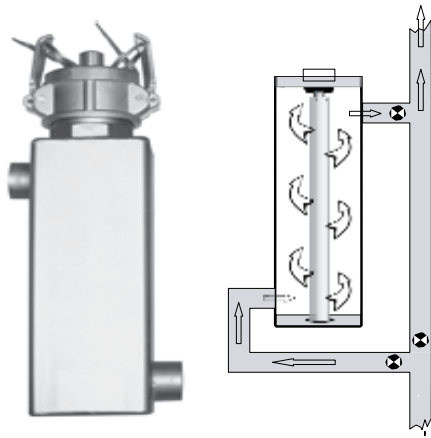


Low Pressure Scrubber

The OEI Magnetic Scrubber is primarily installed prior to pumps or on suction and return lines for fuel, lube oil, hydraulics, coolants and water systems. The Magnetic Scrubber removes ferrous and non-ferrous contaminants prior to entering pumps and fluid lines. The design of the magnetic scrubber allows for high volumes of fluid to enter the Magnetic Scrubber simultaneously from either end without impeding flow rates. OEI has multiple designs to accommodate all applications and will design custom units.

Applications

Fuel · Lube Oil · Hydraulics · Coolants · Water Systems · Milling



Sizes available upon request 1/2" (1.27cm) to 2 1/2" (6.35cm)

*When installing, remember to allow clearance for rod removal

- Designed with multiple ports.
- Allows for pressure from 150 PSI (1034 KPA) (square housing) to 500 PSI (3447 KPA) (round housing) .
- Works in line sizes 1/2" - 2 1/2" (1.27cm-6.35cm) and more.
- Installs horizontally or vertically.
- Designed with 304/316 Grade Stainless Steel.
- Operates in standard 300F (150C).
- 600F (300C) operating temperature available.
- Optional Monel or other alloy construction.

High Volume Scrubber



Round Scrubber



Dual Inline Magnetic Scrubber



- Allows for full exposure of ferrous contamination to the Magnetic Filter Rod.
- Designed with no internal flow restrictions.
- Identifies wear trends from captured contamination and is a predictive maintenance tool.

Magnetic Scrubbers

Low Pressure Manifold Scrubbers



5SC390LR

Suction Side



5SC48CD

Suction Side



5SC34PT9SCL6NPT1

Return Side



SCL0123SCLNPT34134

Return Side

- Mounts to tank outlet to filter fluids as they leave the tank prior to pump.
- Protects pumps.
- Filters ferrous and non-ferrous contaminants to sub-micron levels.
- Applies to suction side of traditional and closed loop hydraulic systems.
- Operates with no flow restriction, removing opportunity for cavitation.



5SC9RP

Low Pressure Magnetic Clear Scrubber

- Designed for full exposure of ferrous contamination to the Magnetic Filter Rod resulting in filtration of ferrous particles to submicron level.
- No internal flow restrictions.
- An inexpensive means of visually checking conditions of flow, color of fluids and contamination collected .
- Allows the evaluation for checking or double checking the system .

Magnetic Scrubbers



Light Weight Scrubber Series

The OEI Light Weight Magnetic Scrubber Series is for low pressure, light-medium viscosity applications such as racing vehicles. This filter improves reliability ;thereby improving the life span of engine performance, protecting fuel pumps and injectors, without adding unnecessary weight. These filters protect against the most damaging contamination at and below submicron levels with minimal flow restriction. Cleaner fuel results in lower emissions and an improved carbon footprint.

Application

- Designed for hydraulic applications with system pressures up to 100PSI(698.476 KPA).
- Light—Medium viscosity.
- Designed to be uni-directional with no screen.
- Female Ports to allow all fittings (JIC, NPT, BARB).
- 2" diameter x 4" or 9" length with 12 ORB.
- Designed with Billet Aluminum for low to medium pressure applications.
- Pressures up to 100PSI.

90 Degree Mount Design



Inline Design



5SY###

Low – Medium Pressure Y-Scrubber

- Designed for inline installation for full exposure of ferrous contamination to the Magnetic Filter Rod resulting in filtration to submicron level.
- Stainless Steel tubing.
- No internal flow restrictions for pressures to 100PSI.
- 1"-3" hose diameter.



Magnetic Scrubbers



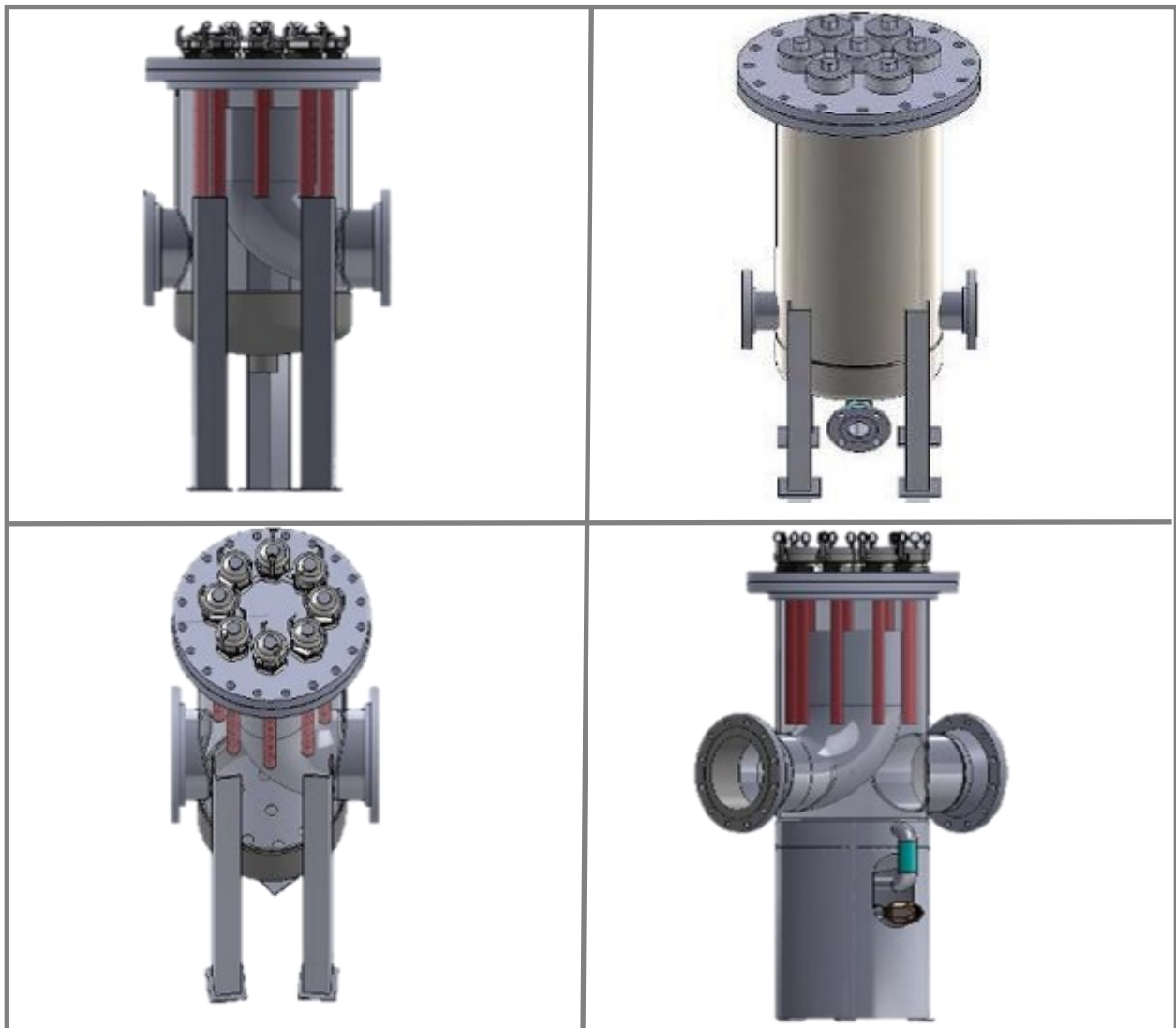
Low Pressure Scrubbers

Oil and Water Magnetic Scrubber

- Multiple Magnetic Filter Rods each with a contamination holding strength of 45lbs (20kg).
- Total contamination holding strength of over 300lbs (136kg).
- Designed as a manual cleaning system.
- As this is a custom design, weights and dimensions vary per application.

Applications

Fuel · Water · Oil





Scrubber Cleaning Instructions

OEI Scrubbers with O-Ring Fasteners

1. Close all valves and relieve pressure.
2. Remove the ORB Plug to expose the Magnetic Filter Rod.
3. Place the Magnetic Filter Rod (MFR) over a plastic bucket and using an oil absorbent towel, wipe the MFR clean. Start from the top (ORB Fastener) and push the contaminants to a the bottom of the MFR to release into the bucket.
4. Before reinstalling the Magnetic Filter, ensure the O-Ring is not damaged.
5. Install the ORB Plug and tighten.
6. Open all valves and check for leaks.

Part Number: 3-932 O-Ring for 32 ORB Plug.

OEI Magnetic Scrubbers with Cam-Loc

1. Close all valves and relieve pressure.
2. Remove the safety pin from the Cam-Loc.
3. Release the Cam-Loc exposing the Magnetic Filter Rod (MFR).
4. Place the MFR over a plastic bucket and using an oil absorbent towel, wipe the MFR clean. Starting at the top (Cam-Loc Fastener) and pushing.
5. Place the Magnetic Filter Rod (MFR) over a plastic bucket and using an oil absorbent towel, wipe the MFR clean. Start from the top (ORB Fastener) and push the contaminants to a the bottom of the MFR to release into the bucket.
6. Inspect the gasket for damage, replace if necessary, then install the Cam-Loc and tighten.
7. Install safety pins.
8. Open all valves and check for leaks.

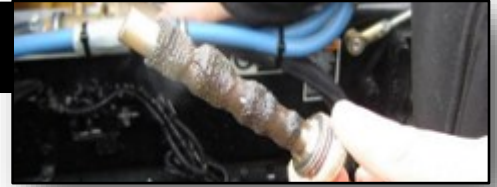
Gasket Part Number:

5SC3SCG – Gasket for a magnetic scrubber with 3”x 3” body (5SC349SCL)

5SC4SCG - Gasket for a magnetic scrubber with 4”x 4” body (5SC##SCL)

5SC6SCG - Gasket for a magnetic scrubber with 6”x 6” body (5SC2##SCL)

Magnetic Scrubbers



Magnetic Scrubbers: Flow Rates

Scrubber Model		5SC349S	5SC12S	5SC24S	5SC36S	5SC212S	5SC224S
Viscosity cSt @ 40C							
Water, Coolant Deisel Fuel (1 - 30 St)							
Single Pass Filtration	GPM	8	21	40	60	50	98
Multi Pass Filtration		30	81	95	122	200	400
Engine, Gear and Hydraulic Oil /cSt (40 - 110cSt)							
Single Pass Filtration	GPM	7	20	38	55	50	98
Multi Pass Filtration		30	65	80	90	190	380
(220 cSt)							
Single Pass Filtration	GPM	6	15	30	45	40	70
Multi Pass Filtration		15	41	76	75	133	200
(460 cSt)							
Single Pass Filtration	GPM	5	12	20	25	25	40
Multi Pass Filtration		10	25	30	35	65	95
(680 cSt)							
Single Pass Filtration	GPM	3	6	10	12	12	20
Multi Pass Filtration		5	13	16	20	40	65
(1000 cSt)							
Single Pass Filtration	GPM	0	3	5	6	8	15
Multi Pass Filtration		0	5	8	11	22	40
Single Pass: Fluid will pass through the magnetic filter once. EX Transfer Station							
Multi-pass: Fluid will pass through the magnetic filter multiple times. EX Lube System							

Magnetic Scrubbers



Low Pressure Scrubber Specifications

5000 Series Square Magnetic Scrubber Filters			
Parts Number	5SC349SCL	5SC12SCL	5SC24SCL
Exterior Height	13" (33cm)	16" (40.64cm)	28" (71.12cm)
Outside Dimension	3"x 3" (7.62cmx7.62cm)	4"x 4" (10.16cmx10.16cm)	4"x 4" (10.16cmx10.16cm)
Inlet/Outlet Port	1 1/2" NPT	2.1/2" NPT	2.1/2" NPT
Drain Plug	3/8"	3/8"	3/8"
Recommended Flow	(Suggested Average) GPH	/LPH	
Diesel Fuel	2100/7949	4500/17034	5500/208019
Transmission, Lube, Oil, Coolant	1700/6435	3800/14384	4800/18169
Flow Rate will vary	as per fluid viscosity		
Magnetic Filter Rod	9"L x 3/4" D 121cm L x 1.9cm D	12"L x 1" D 30.48cm L x 1.9cm D	24"L x 1" D 60.96cm L x 1.9cm D
Magnetic Field Diameter	4" (10.16cm)	6" (15.24cm)	6"(15.24cm)
Number of Radial Fields	10	8	19
Holding Strength	123lbs/ft (183kg/m) 7lbs/lft (2.13/lm)	270lbs/ft (357.1kg/m) 10lbs/lft (3.04/lm)	270lbs/ft(357.1kg/m) 10lbs/ft (3.04/lm)
*Contamination			

***Contamination weight may vary due to density, particle sizing and type of contamination. OEI Magnetic Filters trap non-ferrous contaminants due to static adhesion and embedding.**

Housing	304 stainless steel
Magnetic Filter Rod Material	316 stainless steel
Filtration Capability	Sub-micron to 200+ Micron
Mounts	Vertical
Maximum Temperature	300°F (150C) continuous (600°F(300C) Spec. Order - HH)
Vibration Resistant	Yes
Internal Bypassing	No
Easily Cleaned & Inspected	Yes
Cam-Loc or ORB Plug Access	Optional
Plumbed with Valves	Optional
Warranty	3 years with an operational life of 10+ years
Working Pressure	Maximum 150 PSI (1034 KPA) Cam-Lock Maximum 500 PSI (3447 KPA) ORB
Inlet - Outlet custom sizes are available	3/4" (1.9cm) up to 2.1/2" (6.35cm) NPT, BSP or Flange

Magnetic Scrubbers



Magnetic Scrubbers: How to order

BOX 1	BOX 2	BOX 3	BOX 4	BOX 5	BOX 6	BOX 7	BOX 8	BOX 9	BOX 10
5SC		P	D	24	S	CL	FLN	6	150

BOX 1	SCRUBBER MODEL
5SC	5000 SERIES LARGE FLOW SYSTEMS

BOX 2	MAGNETIC FILTER
34	¾" (1.9cm) D Mag Filter, 3x3x13H (7.62cmx7.62cmx33.02cm)body size
BLANK	1"(2.54cm) D 300F/150C
HH	High Heat 1"(2.54cm) D 600F/300C
2	2" Dia (5.08cm) 300F/150C
2HH	High Heat 2" (5.08cm) D 600F/300C

BOX 3	IN/OUTLET	LOCATION
BLANK	OFFSET PORT	180 Degrees off top port
0	OFFSET PORT	0 Degrees off top port
90	OFFSET PORT	90 Degrees off top port
270	OFFSET PORT	270 Degrees off top port
P	PARALLEL PORTS	Bottom
PT	PARALLEL PORTS	Top
BTM	BOTTOM PORT	Bottom

BOX 4	# OF MAGNETIC FILTERS
BLANK	SINGLE MAGNETIC FILTER
D	DUAL MAGNETIC FILTER
DI	DUAL INLINE MAGNETIC FILTER
T	TRIPLE MAGNETIC FILTER
Q	QUADRUPLE MAGNETIC FILTER

BOX 8	PORT OPTIONS
NPT	NATION PIPE THREAD TAPERED
FLN	FLANGE
WLD	WELDLET
BSP	BRITISH PIPE
ORB	O-RING BOSS (SAE)

BOX 5	LENGTH OF MAGNETIC FILTER
9	9" (22.86cm) 5SC34 SCRUBBER
12	12" (30.48cm)
24	24" (60.96cm)
36	36" (91.44cm)

BOX 6	HOUSING DESIGN
S	SQUARE 150 PSI (1034 KPA) RATING
R	ROUND 500 PSI (3447 KPA) W/ ORB FASTENER

BOX 7	FASTENER FOR MAGNETIC FILTER
CL	CAM-LOCK 150 PSI (1034 KPA) RATING
ORB	ORB 500 PSI (3447 KPA) RATING

BOX 9 PORT SIZE
½ (1.27cm)
¾ (1.9cm)
1 (2.54cm)
1 ½ (3.81cm)
2 (5.08cm)
2 ½ (6.35cm)
ETC

BOX 10 FLANGE ASI CLASS
150
300
600
900
1500

Magnetic Scrubbers



Medium and High Pressure Magnetic Scrubbers

The OEI High Pressure Magnetic Scrubber is designed for quality filtration with minimal flow restriction on traditional hydraulic systems and closed loop high pressure hydraulic systems. With 3000 PSI(20684 KPA) and 6000 PSI(41368.54 KPA), this scrubber is compact and easy to install. Traditional high pressure filters require increased horse power (hp) to maintain flow. Our scrubber design does not require depth media element change out or an increase in hp.

Application

Fuel · Lube Oil · Pneumatics · Hydraulics · Coolant · Water · Grease · Chemicals · Gas

- Designed for hydraulic applications with system pressures up to 6000PSI(41368.54 KPA).
- Designed to be uni-directional with no screen.

High Pressure Y-Scrubber



High Pressure Scrubber



High Pressure Scrubber Specifications

Stainless Steel Scrubber

Working Pressure Non-Shock

3000 psi (20684 kpa) @ 100°F (37C)
2795 psi (19270 kpa) @ 300°F (148C)

Working Pressure Non-Shock

6000 psi (34473 kpa) @ 100°F (37C)
4470 psi (30819 kpa) @ 300°F (148C)

Magnetic Filter Rod Size
Port Types

3000 Series Filter 1" (2.54 cm) diameter
NPT Thread, ORB (SAE), Butt Weld,
code 61 & 62 SAE flange

Magnetic Filter Rod

Composition
Filtration Capability (Ferrous Metals)
Mounts
Maximum Temperature
Vibration Resistant
Service Magnetic Filter

316 Stainless Steel
Sub-micron to 200+ Micron
Vertical or Horizontal
300°F (148C) continuous
Yes
Clean by wiping with cloth

3000 Series Filter

Magnetic Field Diameter
Number of Fields
Holding Strength
Limited Warranty

6" (15.24cm)
8 fields per 12" (30.48cm)
270+ lbs/ft
3 year (15+ years operational life)

Magnetic Y- Strainer



OEI Magnetic Y-Strainers are used to capture ferrous and non ferrous materials from fluids using magnetic radial fields to capture contamination to submicron level. OEI Y - Strainers offer a minimum flow restriction. OEI Y - Strainers prevent damaging contaminate to pass through its hydraulic system causing premature wear and eventual failures which can contaminate the entire system and shut down production.

Applications

- No requirement for additional horsepower to function.
- Provides significant return on investment with life of 15+ years.
- Eliminates the costs of purchasing and disposing of traditional filters.
- Reduces the replacement of all close tolerance components.
- Extends the life of linings and pumps.



Cryogenic Y-Strainer

Design Features

- OEI offers custom designed Magnetic Filter Y Strainers for cryogenic applications.
- Flanged access allows for cleaning at -320F (-195C).
- *If used as a suction strainer OEI recommends removing the filter screen.



Magnetic Y-Strainer



Magnetic Y-Strainer Specifications

The OEI Magnetic Y-Strainer has been designed with high quality products for installation in many applications.

Bronze/Brass	Y-Strainer
Working Pressure Non-Shock	400 psi @ 150°F (65C) 300 psi @ 350°F (176C)
Stainless Steel	Y-Strainer
600# Working Pressure Non-Shock	1440 psi @ 100°F (37C) 965 psi @ 500°F (260C)
1500# Working Pressure Non-Shock	3600 psi @ 100°F(37C) 2390 psi @ 500°F (260C)
Magnetic Filter Rod Size	
Y-Strainer 1" to 1 ½"	2000 Series Filter ½" (1.27cm) diameter
Y-Strainer 2" to 4"	3000 Series Filter 1" (2.54cm) diameter
Inlet / Outlet	NPT Thread or Flange
Magnetic Filter Rod	316 Stainless Steel
Filtration Capability (Ferrous Metals)	Sub-micron to 200+ Micron
Mounts	Vertical or Horizontal
Maximum Temperature	300°F(148C) continuous (600°F (315C)Special Order
Vibration Resistant	Yes
Service Magnetic Filter	Clean by wiping with cloth
2000 Series Filter	
Magnetic Field Diameter	3" (7.62cm)
Number of Fields	13 fields per 12" (30cm)
Holding Strength	57 lbs/ft (84kg/m)
3000 Series Filter	
Magnetic Field Diameter	6" (15.24cm)
Number of Fields	8 fields per 12" (30.48cm)
Holding Strength	270+ lbs/ft (357kg/m)
Limited Warranty	3 years and operating life of 15+ years

Magnetic Y-Strainers



Magnetic Y-Strainer: How to order

BOX 1	BOX 2	BOX 3	BOX 4	BOX 5	BOX 6
5Y	B	112	T		A

BOX 1	MAGNETIC FILTER
5Y	MAGNETIC Y-STRAINER

BOX 2	MATERIAL
B	BRONZE
S	STAINLESS STEEL
BC	CRYOGENICS

BOX 3
PIPE SIZE DIAMETER
1" (2.54cm)
1 1/2" (3.81cm)
2" (5.08cm)
2 1/2" (6.35cm)
3" (7.62cm)
4" (10.16cm)

BOX 4	PORT TYPE
T	THREADED
F	FLANGED

BOX 6	MESH
A	20
C	40
D	60
E	100
X	No mesh

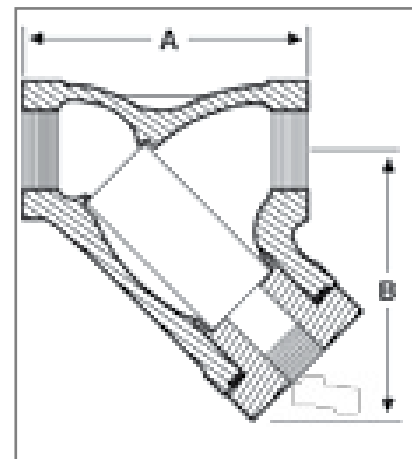
BOX 5	FLANGE ANSI CLASS
*BRONZE LEAVE BLANK	
1	150
3	300
6	600
9	900
15	1500

WORKING PRESSURE (NON-SHOCK):

300 PSI @ 350F Steam Rated

400 PSI @ 150F WOG

In.	Size mm	DIMENSIONS		NET WEIGHT	
		A	B	Lbs	Kg
1	25mm	4 3/4 (12cm)	4 (10cm)	3	1.4
1 1/2	40mm	5 3/4 (14.6cm)	5 (12.7cm)	5	2.3
2	50mm	6 3/4 (17.1cm)	6 (15.2cm)	7	3.2
2 1/2	64mm	8 (20.3cm)	6 (15.2cm)	12	5.5
3	75mm	9 1/2 (23.5cm)	7 (17.5cm)	16	7.3
4	100mm	12 (30.5cm)	10 (25.4cm)	22	10



ADD-Vantage 9000



The Add-Vantage 9000 series utilizes two filtration methods in one design. **The first method** uses a stainless steel element eliminating any chance of “channeling or worm holing”. The element is reusable and available in 40, 25, or 10 micron B200 rating. **The second method** is an OEI patented magnetic filter rod designed to create multiple independent radial magnetic fields which produces a large surface area and a strong field presence to filter contaminants to sub-micron levels.

Applications

Milling · Chemical · Fuel · Oil · Hydraulic *Suction and Return Installation · Fluid · Gear Lube Oil Transmission Fluid · Coolant · Water · Heavy Duty Diesel Trucks · Large Capacity Diesel Engines



Milling ADD-Vantage 9000



- Extends oil change intervals from 250 to 1000 + hours with monitored oil analysis.
- Extends cleaning intervals 6 months - 1 year.
- Flows 40% more fluid than conventional elements.
- Fits conventional paper and glass pack filters.
- Cleans easily with a parts washer, ultrasonic cleaner, solvent, soap and water, or the OEI Enviro Wash Station.
- Removes ferrous and non-ferrous contamination to sub-micron levels which reduces wear on bearings, seals, heads, pistons, and pumps.
- Filters continuously to remove the most damaging contaminants (iron and steel).
- Holds 16 + ounces (448 + grams) of contamination.

High Flow Dual Filtration System

9ADV9-266 or 9ADV9-388

- Employed on a custom OEI high flow filter mount base which allows up to 100 gallons (378L) per minute of flow.
- 12” (FL) or 24” (FF) vessel available.
- 9ADV9-266: Standard Flow (Outside-In).
- 9ADV9-388: Reverse Flow (Inside-Out).

ADD-Vantage 9000



ADV9-G-12

- Filters grease before it reaches bearings.
- Installs on suction side.



9ADV9-M#

- Replaces conventional milling disposable filters.
- Remote mount available from 3/4" - 1 5/8" Inlet/outlet.



9ADV9-700-#

- Lube Oil and Fluid Dispenser Filter.

9ADV9-SV

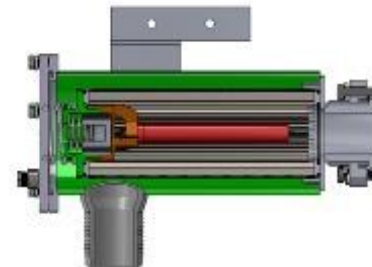
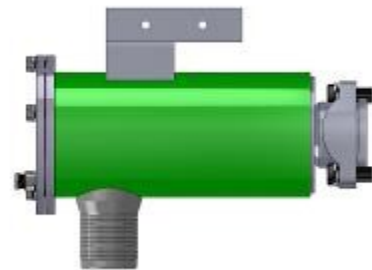


- Suction Filter
- Vertical mount



- Suction Filter
- Horizontal Mount

9ADV9-SH





9ADV9-D9

Duplex Magnetic Filtration System

- Versatile with many port options.
- Designed for 24/7 operation.



9ADV9-1000-SS-FLN#

Stainless Steel Duplex Magnetic Filtration System

- Perfect for corrosive materials in petrochemical fineries and chemical plants.
- Used with Ammonias, Amines, Arsenic acids.



9ADV9-P9XL-NPT2

Parallel Filtration System

- For high flow applications.



ADD-Vantage 8

The **OEI ADD-Vantage 8** is an inline filter designed for variable volume flows and viscosities with the option of perforated, stainless steel, or depth media elements.

Applications

Glycol · Diesel Fuel · Lube Oil



9ADV9-8###

- Designed with –48 ports.
- Offers perforated, stainless steel and disposable elements.
- Up to 350gpm in specific volume ranges and target flow rates.
- Additional ports can be added for hydraulic top ups or fills.
- Vibration resistant.
- Temperature resistant (300F)(148C).
- Holding strength 270lbs./ft(401.8kg/m).



Magnetic In-Tank Filter

Applications

Lube Oil · Reservoirs · Gear Lube · Hydraulics

The **OEI MIT Filter Rods** is an in-tank filter designed with two cleanable filter mediums (patented magnetic filters rods with stainless steel filter elements) to increase filtration capability to submicron level of both ferrous and non-ferrous contamination.



Sizes: 3", 5", and 8"

9ADV9-MIT-#

OEI Magnet In-Tank Return Filter

- Fits all standard return lines.
- Additional ports can be added for hydraulic top ups or fills.
- Vibration resistant.
- Temperature resistant (300F)(148C).
- Holding strength 270lbs./lft(401.8kg/m).

Traditional Return Line Ceramic Magnetic Filter



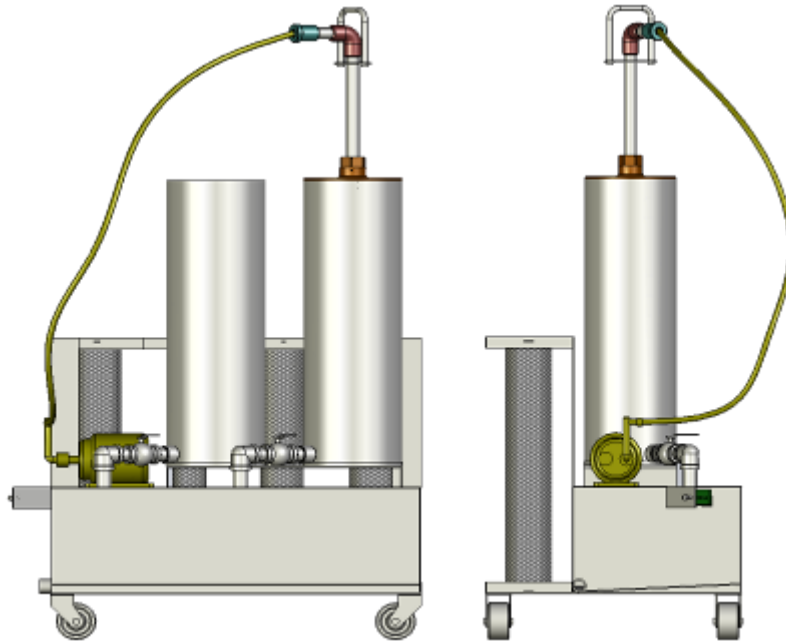
Traditional ceramic return lines have a holding strength of 80lbs/lft (119.02kg/m) compared to the OEI MIT filter with a holding strength of 270lbs/lft (401.8kg/m).



9ADV9—Wash Station

The **Enviro-Wash 9000** is an environmentally friendly and cost effective cleaning system for stainless steel cloth filter elements. This cleaning system is compact, user friendly and replaces the traditional ultrasonic cleaning systems.

OEI's biodegradable cleaning solution will remove carbon, soot, graphite, oils, tars, solvent based products, water repellent greases, waxes, grease, soils and protein deposits.



The Enviro-Wash 9000 system is designed to clean stainless steel cloth elements. The system operates with soak and spray process that takes 30 minutes to cycle elements from dirty to clean.

1. Place dirty elements in the cleanout housing.
2. The housing is flooded with OEI Bio-Cleaner and left to soak for 20 minutes.
3. The bio-cleaning solution is drained into the reservoir and particulate is caught by the filter pad.
4. Use the spray wand with Bio-Cleaner solution to detach any remaining small and large particulate in the stainless cloth media.
5. Attach the spray wand to a shop air hose and spray the inside of the element removing the remaining Bio-Cleaner and any entrenched contamination.
6. Place the element in a clean container or sealed plastic bag for storage until use.
7. Leave the Bio-Cleaner solution to rest in the reservoir to release the oil contamination. The oil will rise to the surface to be absorbed by a recyclable media.

This process takes 30 minutes and allows the cleaning of 2 - 24' elements, 4 - 12" elements and 6 - 6" elements.

OEI Bio-cleaner has a cleaning capacity of 900+ filter elements on average. The reservoir holds 10 gallons of bio-cleaner and will require topping up during the ongoing cleaning.



Advantage 9000 Specifications

Filter Housing

High Grade Carbon Steel

Primary Filter

Filter Element	Exceeds ISO 4572 Standards
Collapse Pressure	In accordance with ISO 2941
Filter Media	Stainless Steel Beta 200=10, 25, 40
5" (12.7cm) x 24" (60.96cm) Housing	850 square inches (5483.86 square cm) filtration
5" (12.7cm) x 12"(30.48) Housing	400 square inches (2580.64 square cm) filtration
5" (12.7cm) x 9" (22.86cm) Housing	300 square inches (1935.48 square cm) filtration
4.25" (10.79cm) x 10" (25.4cm) Housing	275 square inches (1774.19 square cm) filtration
3.62" (9.19cm) x 8" (20.32cm) Housing	195 square inches (1258.06 square cm) filtration

Secondary Filter

Magnetic Filter Rod	316 Stainless Steel
Filtration Capability	Submicron to 100+ micron
Maximum Temperature	300° F (148C) continuous
Vibration Resistance	Yes
Service Magnetic Filter	Clean by wiping with cloth
Magnetic Filter Diameter	4" (10.16cm)
Number of Fields	10 fields per 12" (30.48cm)
Magnetic Filter Area	62.8 cubic inches (1029.1 cubic cm)
Holding Strength	123 lbs/lft (55.79kg/m)

ADD-Vantage 9000 Cross Over Ordering



3.625" OD Filter Dimensions	Filter Adapters
ADV9-1000	Primary Fuel Filter for most CAT/Cummins/Detroit/Mac/Volvo/Mercedes
9EA3010401	Engine Adapter 1" x14 UN (BF 957)
9SCG20	Gasket 2.47"ID x 2.85"OD
9ADV9-B262	Engine Lube, Compressor Lube, Hydraulic Applications
9EA3010202	Engine Adapter 11/8" x 16UN
SCG20	Gasket 2.412"ID x 2.812"OD
9ADV9-PH3976A	Engine Lube, Compressor Lube and Hydraulic Applications
9EA3010201	Engine Adaptor 1" x 12UN
9SCG20	Gasket 2.47" x 2.85"
9ADV9-B237	Engine lube, Compressor Lube and Hydraulic Applications
9EA3010301	Engine Adapter 3/4" x 16UN
9SCG20	Gasket 2.455" ID x 2.835" OD
3.625" Common Filter Components	
9B3020201	Canister Body 3.625: x 7.5L
9EC3030001	Filter End Cap
9BPA3050201	Bypass and Magnetic Filter 73mm x 1Bar/w 25RNC516525
9BPS3060001	Bypass Coil Spring
9OR218	Filter Element O-Ring
9OR236	End Cap O-Ring
9DP263750	Drain Plug 3/4" x 16 SAE
9CG263860	Drain Plug Gasket 3/4"
9EL3040201	S/S Filter Element
4.25"OD Filter Dimensions	Engine Adapters
9ADV9-PH49A	CAT/Volvo/Mack: CAT 1R0658, 1R0739, 1R1807, 2P4004, 2Y8096
9EA4010301	Engine Adapter 1 1/8" x 16UN
9SCG9	Gasket 3.59" ID x 4.01" OD
9ADV9-B7155	Hitachi Excavators, Kobelco Wheel Loader
9EA4010401	Engine Adapter 1 1/2" x 16UN Gasket 3.875"ID x 4.315 OD
9ADV9-PH3786	Ford/IHC Trucks w/ 7.3 Turbo Diesel (94-03)
9EA4010201	Engine Adapter 1 1/2" x 16UN
9ADV9-0958	K2000 Fuel Primary
9EA5010203	Engine Adapter 1 1/8" x 12UN
9SCG18	Gasket 3.85" ID x 4.35 OD
9ADV9-0959	K2000 Fuel Secondary
9EA5010204	Engine Adapter 1 1/16" x 16UN
4.25" Common Filter Components	
9B4020001	Canister Body 3.625: x 7.5L
9EC4030001	Filter End Cap
9BPA4050001	Bypass and Magnetic Filter 73mm x 1Bar/w 25RNC516525
9BPS4060001	Bypass Coil Spring
9OR226	Filter Element O-Ring
9OR242	End Cap O-Ring
9DP263750	Drain Plug 3/4" x 16 SAE
9CG263860	Drain Plug Gasket 3/4"
9EL4040101	S/S Filter Element

ADD-Vantage 9000 / Caterpillar Cross Over Ordering



5.0"OD Filter Dimensions	Engine Adapters
9ADV9-0755	CAT/Volvo/Mack: CAT 1R0658, 1R0739, 1R1807, 2P4004, 2Y8096
9EA5010202	Engine Adapter 1 1/8" x 16UN
9SCG18	Gasket 3.59" ID x 4.01" OD
9ADV9-4005	Hitachi Excavators, Kobelco Wheel Loader
9EA501201	Engine Adapter 1 1/2" x 16UN Gasket 3.875"ID x 4.315 OD
9SC67	Ford/IHC Trucks w/ 7.3 Turbo Diesel (94-03)
9ADV9-3566	Engine Adapter 1 1/2" x 16UN
9EA5010007	K2000 Fuel Primary
9SCG18	Engine Adapter 1 1/8" x 12UN
9ADV9-3612	Gasket 3.85" ID x 4.35 OD
9EA5010004	K2000 Fuel Secondary
9SCG10	Engine Adapter 1 1/16" x 16UN
9ADV9-3000	N14 Cummins
9EA5010101	Engine Adapter 2 1/4" x 12UN
9SCG3	Gasket 4.06" ID x 4.58" OD
9ADV9-9001	Cummins, ISX, ISB, ISC, ISM
9EA5010003	Engine Adapter 95mm x 2.5
9SCG8	Gasket 4.11" ID x 4.31" OD
9ADV9-9024	Cummins QSK60
9EA5010010	Engine Adapter 90mm x 2.0 Gasket 4.0" x 5.68" OD
5.0" Common Filter Components	
9B5020101	Canister Body N14
9B5020001	Canister Body 5" OD x 12 5/8"L
PB5020202	Canister Body 5" OD x 9 7/8"L
9EL5040001	S/S Filter Element for 12 5/8" Body and N14
9EL5040002	S'S Filter Element for 9 7/8" Body
9BPA5050001	Bypass and Magnetic Filter (25RNC387) 12 5/8 Body
9BPA5050002	Bypass & Magnetic Filter (25RNC3845) 9 7/8 Body
9BPS5060001	Bypass Coil Spring
9OR230	Filter Element O-Ring
9OR348	Drain Plug 3/4" x 16 SAE
9DP263750	Drain Plug 3/4" x 16 SAE
9CG263860	Drain Plug Gasket 3/4"
9EL4040001	S/S Filter Element
9EC4030001	Filter End Cap

ADD-Vantage 9000 / Caterpillar Cross Over Ordering



ADD-VANTAGE 9000 Hydraulic Filter	
9ADV9-926170 Short Version	
9B520002	CAT/Volvo/Mack: CAT 1R0658, 1R0739, 1R1807, 2P4004, 2Y8096
9EL5040002	Engine Adapter 1 1/8" x 16UN
9BPA5050002	Gasket 3.59" ID x 4.01" OD
9ADV9-9261701 Standard	Hitachi Excavators, Kobelco Wheel Loader
9B520001	Engine Adapter 1 1/2" x 16UN Gasket 3.875" ID x 4.315 OD
9EL5040001	Ford/IHC Trucks w/ 7.3 Turbo Diesel (94-03)
9BPA5050001	Engine Adapter 1 1/2" x 16UN
9ADV9-926170LX2 Long Version	K2000 Fuel Primary
9B520401	Engine Adapter 1 1/8" x 12UN
9EL5040401-B	Gasket 3.85" ID x 4.35 OD
9BPA5050401	K2000 Fuel Secondary
9ADV9-266-FF High Flow Filter	Engine Adapter 1 1/16" x 16UN
9EA61010	N14 Cummins
9B520401	Engine Adapter 2 1/4" x 12UN
9EL5040401-B	Gasket 4.06" ID x 4.58" OD
9BPA5050401	Cummins, ISX, ISB, ISC, ISM
Common Filter Components	Engine Adapter 95mm x 2.5
9ea5010008	Gasket 4.11" ID x 4.31" OD
9BPS5060001	Cummins QSK60
9EC5030001	Engine Adapter 90mm x 2.0 Gasket 4.0" x 5.68" OD
9OR230	Filter Element O-Ring
9OR348	End Cap O-Ring
2DP263750	Drain Plug 3/4" x 16 SAE
9CG263860	Copper Gasket 3/4"
ADD-Vantage 9000 Milling Filter	
9ADV9-M-12	
9B520001	Canister Body 12 5/8"
9EL5040003	S/S Filter 1/8" Perf. 4.17 OD x 2.83 ID x 9.7 L
9BPA5050001	Bypass and Magnetic Filter 1 Bar 25RNC387
9ADV9-M-24	
9B520401	Canister Body 24"
9EL5040004	S/S Filter 1/8" Perf. 4.17 OD x 2.83 ID x 9.7 L
9BPA5050401	Bypass and Magnetic Filter 1 Bar 25RNC3819
Common Filter Components	
9EA5010008	Mount Adapter 1 1/2" x 16 UN
9BPS5060001	Bypass Coil Spring
9EC5040001	Filter End Cap
9OR230	Filter Element O-Ring
9OR348	Drain Plug
9DP263750	Drain Plug 3/4" x 16 SAE
9CG263860	Copper Gasket 3/4"



ADD-Vantage 9000 Grease Filter	
9ADV9-G-12	
9EA5004901	Mount Adapter 1 1/2" x 16UNw/ Solid Element
9B5020001	Canister Body 5" OD x 12 5/8" L
9EC50400003	End Cap w/3R8 Magnetic Filter
9OR348	End Cap O-Ring
9000 Series Remote Filter Base Mount	
9RM3000	Base Mount for 9ADV9-3000 N-19
9RM3612	Base Mount for 9ADV9-3612
9RMHY5	Base Mount for 9ADV9-926170IL
9RM266	Base Mount for High Filtration System
Stainless Steel Suction Strainers	
9ELSSSSNPT38	S/S Suction Strainer 3/8" NPT 1.80" OD x 3.50"L
9ELSSSSNPT12	S/S Suction Strainer 1/2" NPT 1.80" OD x 4.10"L
9ELSSSSNPT34	S/S Suction Strainer 3/4" NPT 2.60" OD x 3.50"L
9ELSSSSNPT100	S/S Suction Strainer 1" NPT 2.60" OD x 5.50"L
9ELSSSSNPT114	S/S Suction Strainer 1 1/4" NPT 3.40" OD x 7.70"L
9ELSSSSNPT112	S/S Suction Strainer 1 1/2" NPT 3.40" OD x 8.90"L
9ELSSSSNPT200	S/S Suction Strainer 2" NPT 3.40" OD x 10.0"L
9ELSSSSNPT212	S/S Suction Strainer 2 1/2" NPT 5.90" OD x 8.40"L
9ELSSSSNPT300	S/S Suction Strainer 3" NPT 5.90" OD x 10.7"L
Stainless Steel Replacement Elements	
9ELSS9600825	Stainless Element 25 Micron Absolute/10 Micron Nominal 8"L
9ELSS9600840	Stainless Element 40 Micron Absolute/10 Micron Nominal 8"L
9ELSS96001625	Stainless Element 25 Micron Absolute/10 Micron Nominal 16"L
9ELSS96001640	Stainless Element 40 Micron Absolute/10 Micron Nominal 16"L
9ELSS9800825	Stainless Element 25 Micron Absolute/10 Micron Nominal 8"L
9ELSS9800840	Stainless Element 40 Micron Absolute/10 Micron Nominal 16"L
9ELSS98001625	Stainless Element 25 Micron Absolute/10 Micron Nominal 8"L
9ELSS98001640	Stainless Element 40 Micron Absolute/10 Micron Nominal 16"L
ADD-Vantage 9000 Disposable Cellulose Filters	
9ELDP3040201	Filter Element 2.76"OD x 1.6"ID x 6.69"L 10 Micron Nominal
9ELDP4040101	Filter Element 3.54"OD x 2.28"ID x 7.48"L 10 Micron Nominal
9ELDP5040002	Filter Element 4.17"OD x 2.28"ID x 7.0"L 10 Micron Nominal
9ELDP5040001	Filter Element 4.17"OD x 2.83"ID x 9.75"L 10 Micron Nominal
9ELWA5040001	Filter Element 4.17"OD x 2.83"ID x 9.73"L 10 Water Absorbing
9ELWA5040002	Filter Element 4.17"OD x 2.83"ID x 7.0"L 10 Water Absorbing
9ELWR5040401	Filter Element 4.00"OD x 2.83"ID x 21.6"L 10 Water Absorbing

ADD-Vantage 9000 / Caterpillar Cross Over Ordering



CAT Part Number	Threading	Dimensions	Gasket	ADD-Vantage 9000 Part #
1G-8878	1 3/8" -12	9.44"(23.97cm)Lx 3.82"(9.75cm)OD	2.76"(7.01cm) x 2.48"(6.29cm)	9ADV9-8878
1P-2299	1"-14	3.65"(9.27cm) x 7"(17.78cm)	2.81"(7.13cm) x 2.42"(6.14cm)	9ADV9-1000
1R-0658	1 1/8" - 16	4.25"(10.79cm) x 10.3"(26.16cm)	3.89"(9.88cm) x 3.55"(9.07cm)	9ADV9-PH49A
1R-0712	1" -14	9.43"(23.9cm) L x 3.72"(9.44cm)	2.81"(7.13cm) x 2.42"(6.14cm)	9ADV9-1000
1R-0713	1 1/8" - 16	3.69"(9.37cm) x 5.2"(13.2cm)	2.81"(7.13cm) x 2.42"(6.14cm)	9ADV9-B260
1R-0714	1 1/8" - 16	4.28"(10.87cm) x 6(15.24cm)	3.967"(10.07cm) x 3.587"(9.11cm)	9ADV9-PH49A
1R-0715	1 3/8" - 16	5.3"(13.46cm) x 12"(30.48cm)	4.32"(10.97cm) x 3.82"(9.7cm)	9adv9-3555L
1R-0716	1 1/2" - 16	5.3"(13.46cm) x 12"(30.48cm)	4.31"(10.94cm) x 3.92"(9.95cm)	9ADV9-4005
1R-0734	1" -12	5.35"(13.58cm)L x 3.66"(9.29cm)	2.81"(7.13cm) x 2.42"(6.14cm)	9ADV9-B262
1R-0739	1 1/8" - 16	4.282"(10.87cm) x 10.3"(26.16cm)	3.96"(10.05cm) x 3.58"(9.09cm)	9ADV9-PH49A
1R-0740	1" - 14	6.95"(17.65cm)L x 3.68"(9.34cm)	2.83"(2.83cm) x 2.46"(6.24cm)	9ADV9-1000
1R-0749	1" - 14	9.42"(23.92cm)L x 3.68"(9.34cm)	2.83"(2.83cm) x 2.46"(6.24cm)	9ADV9-1000
1R-0750	1" - 14	6.95"(17.65cm)L x 3.68"(9.34cm)	2.83"(2.83cm) x 2.46"(6.24cm)	9ADV9-1000
1R-0751	7/8" - 14	7"(17.78cm) x 3.1"(7.87cm)	2.89"(7.34cm) x 2.5"(6.35cm)	9ADV9-0751
1R-0753	7/8" - 14	9"(22.86cm) x 3.625"(9.2cm)	2.83"(2.83cm) x 2.46"(6.24cm)	9ADV9-0751
1R-0755	1 3/8" -16	12.19"(30.96cm) x 5.34"(13.56cm)	4.30"(10.92) x 3.91"(9.93cm)	9ADV9-0755
1R-0762	1" - 14	10.75"(27.30cm) x 3.7"(9.39cm)	3.6"(9.14cm) x 3.03"(7.69cm)	9ADV9-0762
1R-0769	1" - 14	9.90"(25.14cm) x 4.25"(10.79cm)	4.25"(10.79cm) x 3.68"(9.34cm)	9ADV9-0769
1R-0770	1" - 14	4.25"(10.79cm) x 7.6"(19.3cm)	4.25"(10.79cm) x 3.7"(9.39cm)	9ADV9-1644
1R-0771	1" - 14	4.25"(10.79cm) x 9.3"(23.62)	4.24"(10.76cm) x 3.845"(9.76cm)	9ADV9-0769
1R-0781	1" - 14	4.25"(10.79cm) x 9.3"(23.62cm)	4.24"(10.76cm) x 3.845"(9.76cm)	9ADV9-0769
1R-1807	1 1/8" - 16	4"(10.16cm) x 10.38"(26.36cm)	3.967"(10.07cm) x 3.587"(9.11cm)	9ADV9-PH49A
1R-1808	1 1/2" - 16	5.3"(13.46cm x 12"(30.48cm)	4.35"(11.04cm) x 3.845"(9.75cm)	9ADV9-4005
1W-2660	1 1/2" - 16	5.3"(13.46cm x 12"(30.48cm)	4.35"(11.04cm) x 3.845"(9.75cm)	9ADV9-3566
1W-8845	1 3/8" - 16	9.75"(24.76) x 4.66"(11.83cm)	4.32"(10.97cm) x 3.85"(9.77cm)	9ADV9-8845
2P-4004	1 1/8" - 16	4.25"(10.79cm) x 10.3"(26.16cm)	3.89"(9.88cm) x 3.55"(9.01cm)	9ADV9-PH49A

ADD-Vantage 9000 / Caterpillar Cross Over Ordering



CAT Part Number	Threading	Dimensions	Gasket	ADD-Vantage 9000 Part #
2P-4005	1 1/2" - 16	5.3"(13.46cm) x 12"(30.48cm)	4.31"(10.94cm) x 3.92"(9.95cm)	9ADV9-4005
2Y-8096	1 1/8" - 16	4.25"(10.79cm) x 10.3"(26.16cm)	3.89"(9.88cm) x 3.55"(9.01cm)	9ADV9-PH49A
2Y-8097	1 1/2" - 16	5.3"(13.46cm) x 12"(30.48cm)	4.31"(10.94cm) x 3.92"(9.95cm)	9ADV9-4005
2Y-8670	1" - 14	3.66"(9.29cm) x 6.85"(17.39)	2.81"(7.13cm) x 2.42"(6.14cm)	9ADV9-1000
2P-4005	1 1/2" - 16	5.3"(13.46cm) x 12"(30.48cm)	4.31"(10.94cm) x 3.92"(9.95cm)	9ADV9-4005
2Y-8096	1 1/8" - 16	4.25"(10.79cm) x 10.3"(26.16cm)	3.89"(9.88cm) x 3.55"(9.01cm)	9ADV9-PH49A
2Y-8097	1 1/2" - 16	5.3"(13.46cm) x 12"(30.48cm)	4.31"(10.94cm) x 3.92"(9.95cm)	9ADV9-4005
2Y-8670	1" - 14	3.66"(9.29cm) x 6.85"(17.39cm)	2.81"(7.13cm) x 2.42"(6.14cm)	9ADV9-1000
077-3058	1 1/2" - 16	5"(12.7cm) x 7"(17.78cm)	none	9ADV9-926170
077-3492	1" - 12	3"(7.62cm) x 5"(12.7cm)	2.81"(7.13cm) x 2.42"(6.14cm)	9ADV9-B262
093-7521	1 1/8" - 16	4"(10.16cm) x 7"(17.78)	2.83"(7.18cm) x 2.46"(6.24cm)	9ADV9-B260
102-2828	1 3/8" - 12	9.44"(23.97cm)L x 3.82"(9.7cm)	2.76"(7.01cm) x 2.48"(6.29cm)	9ADV9-8878
108-1153	1 3/4" - 12	5"(12.7cm) x 12"(30.48cm)	3.34"(8.48cm) x 3.11"(8.48cm)	9ADV9-6636
121-9868	1 3/8" - 12	9.44"(23.97cm)L x 3.82"(9.7cm)	2.76"(7.01cm) x 2.48	9ADV9-8878
126-1813	2" - 12	5.52"(14.02cm)L x 3.13"(7.95cm)	3.13"(7.95cm) x 1.86"(4.72cm)	9ADV9-1814
126-1814	2" - 12	9.52"(24.18cm)L x 3.13"(7.85cm)	3.13"(7.85cm) x 1.86"(4.72cm)	9ADV9-1814
126-1815	1 3/8" - 12	6"(15.24cm) x 3.8"(9.65cm)	2.76"(7.01cm) x 2.48"(6.29cm)	9ADV9-8878
126-1816	1 3/4" - 12	4.25"(10.79cm) x 8"(20.32cm)	3.34"(8.48cm) x 3.13"(7.95cm)	9ADV9-6636
126-1817	1 3/4" - 12	4.25"(10.79cm) x 12"(30.48cm)	3.39"(8.61cm) x 3.11"(7.89cm)	9ADV9-6636
126-1818	1 3/8" - 12	4.7"(11.93cm) x 11.6"(29.46cm)	2.76"(7.01cm) x 2.48"(6.29cm)	9ADV9-8878
129-0373	1" - 14	4.25"(10.79cm) x 11.3"(28.7cm)	3.5"(8.89cm) x 3.18"(8.07cm)	9ADV9-0373
130-3212	2" - 12	9.52"(24.18cm)L x 3.13"(7.95cm)	3.13"(7.95cm) X 1.86"(4.72cm)	9ADV9-1814
133-5673	1" - 14	4.25"(10.79cm) x 11.3"(28.7cm)	3.5"(8.89cm) x 3.18"(8.07cm)	9ADV9-1265
134-3014	1 3/4" - 12	5"(12.7cm) x 12"(30.48cm)	3.35"(8.5cm) x 3.11"(7.88cm)	9ADV9-6636
144-0832	1 1/2" - 16	6.66"(16.91cm)L x 5.05"(12.82cm)	5.05"(12.82cm) x 4.71"(11.96cm)	9ADV9-926170
144-6691	1 3/8" - 12	6"(15.24cm) x 3.8"(9.65cm)	2.76"(7.01cm) x 2.48"(6.29cm)	9ADV9-8878
152-6902	1 3/4" - 12	14.24"(36.16cm)L x 4.77"(12.11cm)	3.39"(8.61cm) x 3.11"(7.89cm)	9ADV9-6636

ADD-Vantage 9000 / Caterpillar Cross Over Ordering



CAT Part Number	Threading	Dimensions	Gasket	ADD-Vantage 9000 Part #
156-0214	1 3/8" -12	9"(22.86cm) x 3.8"(9.65cm)	2.76"(7.01cm) x 2.48"(6.29cm)	9ADV9-8878
185-0337	2" - 12	3"(7.62cm) x 9"(22.86cm)	3.13"(7.95cm) x 1.86"(4.72cm)	9ADV9-1814
198-3188	1 1/2" - 16	5"(12.7cm) x 11"(27.94cm)	none	9ADV9-926170
207-5035	1 3/4" - 12	5"(12.7cm) x 14"(35.56cm)	3.34"(8.48cm) x 3.11"(7.89cm)	9ADV9-6636HP
222-6713	1 3/8" -12	9.44"(23.97cm)L x 3.82"(9.7cm)D	2.76"(7.01cm) x 2.48"(6.29cm)	9ADV9-8878
223-7809	1 1/2" - 16	5"(12.7cm) x 7"(17.78cm)	none	9ADV9-926170
225-4118	1 3/4" - 12	5"(12.7cm) x 12"(30.48cm)	3.38"(8.58cm) x 3.10"(7.87cm)	9ADV9-6636
233-7809	1 1/2" - 16	6.66"(16.91cm)L X 4.91"(12.47cm)	5.05"(12.82cm) x 4.76"(12.09cm)	9ADV9-926170
244-4484	1 1/2" - 16	5.3"(13.46cm) x 11.73"(29.79cm)	4.35"(11.04cm) x 3.845"(9.76cm)	9ADV9-3566
269-8325	M12 - 1.5	3 11/16"(9.36cm) x 8"(20.32cm)	2.87"(7.28cm) x 2.46"(6.24cm)	9ADV9-7378
271-5076	M22 - 1.5	3 11/16"(9.36cm) x 8"(20.32cm)	2.82"(7.16cm) x 2.47"(6.27cm)	9ADV9-PH2
272-1788	1 1/2" - 16	5.3"(13.46cm) x 12"(30.48cm)	4.31"(10.94cm) x 3.92"(9.95cm)	9ADV9-4005
275-2604	1 1/2" - 16	5.3"(13.46cm) x 12"(30.48cm)	4.31"(10.94cm) - 3.92"(9.95cm)	9ADV9-4005
299-8229	M12 x 1.5	3.06"(7.77cm) x 5.5"(13.97cm)	2.81"(7.1cm) - 2.47"(6.3cm)	9ADV9-8229
308-7298	M22 - 1.5	3 11/16"(9.36cm) x 8"(20.32cm)	2.82"(7.16cm) x 2.47"(6.27cm)	9ADV9-PH2
331-3306	1 1/4" - 12	5"(12.7cm) x 11"(27.94cm)	4.32"(10.97cm) x 3.82"(9.7cm)	9ADV9-0958
326-1643	1" - 14	4.25"(10.79cm) x 9.3"(23.62cm)	4.25"(10.97cm) x 3.847"(9.77cm)	9ADV9-1644
326-1644	1" - 14	4.25"(10.03cm) X 7.6"(19.3cm)	4.25"(10.97cm) x 3.7"(9.39cm)	9ADV9-1644
126-1817	1 3/4" - 12	4.25"(10.79cm) x 12"(30.48cm)	3.39"(8.61cm) x 3.11"(7.89cm)	9ADV9-6636
126-1818	1 3/8" -12	4.7"(11.93cm) x 11.6"(29.46cm)	2.76"(7.01cm) x 2.48"(6.29cm)	9ADV9-8878

ADD-Vantage 9000 / Caterpillar Cross Over Ordering



CAT Part Number		Dimensions	ADD-Vantage 9000 Part #
1M-9156	element	9.25"(23.49cm)L x 4.0"(10.16cm) x 2.27"(5.76cm)	9ELSS77325
1R-0659	element	9.277"(23.56cm) X 3.968"(10.07cm) X 1.635"(4.15cm)	9ELSS048440
1R-0718	element	9.277"(23.56cm) X 3.968"(10.07cm) X 1.635"(4.15cm)	9ELSS048440
1R-0719	element	9.25"(23.49cm)L X 4.0"(10.16cm) X 2.3"(5.84cm)	9ELSS77340
1R-0722	element	11"(27.94cm) X 5.07"(12.87cm) X 3.375"(8.57cm)	9ELSS72240
1R-0724	element	6.5"(16.51cm)X 3.375"(8.57cm) X 0.4"(1.01cm)idt X 1.083"(2.75cm) IDB	9ELSS072425
1R-0726	element	10.17"(25.83cm) X 7.325"(18.6cm) X 2.63"(6.68cm)	9ELSS072640
1R-0728	element	9"(22.86cm) X 3.09"(7.84cm) X 1.86"(4.72cm)	9ELSS072840
1R-0732	element	9.0"(22.86cm)L X 6.81"(17.29cm) X 3.93"(9.98cm)	9ELSS70940
1R-0735	element	7"(17.78cm)L X 5.05"(12.82cm)X 3.375"(8.57cm)	9ELSS50725
1R-0741	element	9.0"(22.86cm)L x 5.09"(12.92cm) x 3.375"(8.57cm)	9ELSS77840
1R-0746	element	5.65"(14.35cm) X 2.9"(7.36cm) X 1.06"(2.69cm)	9ELSS74640
1R-0756	element	9.23"(23.44cm) X 3.92"(9.95cm) X 1.61"(4.08cm)	9ELSS048440
1R-0773	element	9.25"(23.49cm)L x 4.0"(10.16cm) x 2.3"(5.84cm)	9ELSS77340
1R-0774	element	11"(27.94cm) X 5.13"(13.03cm) X 3.34"(8.48cm)	9ELSS77440
1R-0777	element	7"(17.78cm)L X 5.05"(12.82cm)X 3.375"(8.57cm)	9ELSS50725
1R-0778	element	9.0"(22.86cm)L x 5.09"(12.92cm) x 3.375"(8.57cm)	9ELSS77840
1R-1809	element	10.5"(26.67cm) X 4.78"(12.14cm) x 2.04"(5.18cm)	9ELSS180925
1S-9150	element	9"(22.86cm) x 3.08"(7.82cm) x 1.37"(3.47cm)	9ELSS915025
1U-2093	element	9.25"(23.49cm)L x 4.0"(10.16cm) x 2.3"(5.84cm)	9ELSS77340
1W-4136	element	13.6"(34.54cm) X 7.3"(18.54cm) X 3.4"(8.63cm)	9ELSS4136
2J-1560	element	9.0"(22.86cm)L x 5.09"(12.92cm) x 3.375"(8.57cm)	9ELSS77840
2M-3943	element	9.25"(23.49cm)L x 4.0"(10.16cm) x 2.3"(5.84cm)	9ELSS77340
2P-5834	element	5.65"(14.35cm) X 3.0"(7.62cm) X 1.05"(2.66cm)	9ELSS583440
054-1719	element	9.02"(22.91cm)L X 1.61"(4.08cm) X 3.85"(9.77cm)	9ELSSK409X25
077-5479	element	9.02"(22.91cm)L X 1.61"(4.08cm) X 3.85"(9.77cm)	9ELSSK409X25
086-3940	element	9.02"(22.91cm)L X 1.61"(4.08cm) X 3.85"(9.77cm)	9ELSSK409X25
094-4412	element	17.7"(44.95cm) X 5.8"(14.73cm) X 4.33"(10.99cm)	9ELSS5818X40
104-6931	element	7"(17.78cm)L X 5.05"(12.84cm) x 3.375"(8.57cm)	9ELSS50725
132-8875	element	9.25"(23.49cm)L x 4.0"(10.16cm) x 2.3"(5.84cm)	9ELSS77325
132-8876	element	9.0"(22.86cm)L x 5.09"(12.92cm) x 3.375"(8.57cm)	9ELSS77825
133-0761	element	8.03"(20.39cm)L x 3.1"(7.87cm) X 1.71"(4.34cm)	9ELSS96008X25
134-0964	element	8.03"(20.39cm)L x 3.1"(7.87cm) X 1.71"(4.34cm)	9ELSS96008X25
139-1535	element	9.0"(22.86cm)L X 6.81"(17.29cm) X 3.93"(9.98cm)	9ELSS70925
139-1536	element	11"(27.94cm) X 5.07"(12.87cm) X 3.35"(8.5cm)	9ELSS72240
139-1537	element	7"(17.78cm)L X 5.12"(13cm) x 3.35"(8.5cm)	9ELSS50725
167-2009	element	9.0"(22.86cm)L X 6.875"(17.46cm) X 3.9"(9.9cm)	9ELSS70940
179-9806	element	16.7"(42.41cm) X 5.6"(14.22cm) X 3.88"(9.85cm)	9ELSS980625
249-2337	element	9"(22.86cm)L X 6.75"(17.14cm) x 4.25"(10.79cm)	9ELSS70925
328-3655	element	10.5"(26.67cm) X 4.78"(12.14cm) x 2.04"(5.18cm)	9ELSS180925
338-3540	element	10.5"(26.67cm) X 4.78"(12.14cm) x 2.04"(5.18cm)	9ELSS180925



Kidney loops extend the life of rotating equipment and hydraulic systems by keeping fluids clean. Kidney loops are self-contained filtration units designed to hook up to applications requiring additional filtration to remove, clean, and return fluids to equipment. Units can be applied during scheduled down-time or run while equipment is in operation to boost productivity through extending maintenance cycles. OEI has specially designed kidney loops for mobility and ease of access in compact areas.

Applications

Hydraulic Systems · Rotating Equipment · Reservoirs · Glycol

- Removes ferrous and non ferrous contaminants to submicron levels.
- The magnetic filter rod removes water particles.
- Water absorption elements available.
- Filters 24/7.
- Cleanable and reusable for 15+ years.
- Custom, compact designs available.



3 Stage Design offering a highly efficient and cleanable long-life filtration system:

- **Stage 1** - A magnetic scrubber capable of sub-micron filtration of ferrous and non ferrous contamination.
- **Stage 2** - ADD-Vantage 9000 filters containing reusable stainless steel cloth media elements (eliminates worm-holing and channeling) with an absolute rating of 25-40 microns and a nominal rating of 8-10 microns. This media element can be cleaned and reused for over 5 years.
- **Stage 3** - The OEI magnetic filter rod inside the ADD-Vantage 9000 stainless steel element traps ferrous contamination to sub-micron levels because of OEI's strong radial fields.

Kidney Loops



One Eye Industries produces a range of Kidney Loops to fit various needs across many applications. To select the correct kidney loop application, consider the following: accessibility, space restrictions, reservoir size, flow rate, viscosity, fluid and ambient temperature, and power requirements.



8KFCD-51-91

Mobile or Stationary Cooling Kidney Loop

- Employs two separate cooling and filtering systems in one unit.
- Ideal for large individual gearboxes or fluid Reservoirs.



8KLMH-54-94

Mobile Heating Kidney Loop

- Dual Stage Magnetic Filtration Kidney Loop features a heating element to increase flow and filtration capability in cold environments.

Kidney Loops



- Ideal for applications with limited space such as drag lines and shovels.
- Designed for permanent installation on large gearboxes or reservoirs.
- Transportable or stationary.
- Lifting lugs and wheels available upon request.

8KLF-51-91



Low Flow Application

- 3(11.35) - 7(26.49)gpm/lpm

8KLM-54-94



Medium Flow Application

- 7(26.49) - 15(56.78L)gpm/lpm



8KLBP

Backpack Kidney Loop

- Dual Stage Magnetic Filtration Kidney Loop manufactured in a backpack for convenience and field use.
- For remote locations.
- Designed for small reservoirs with max 300cST oil.
- Available with a two stage ADD-Vantage 9000 Magnetic Filter with Stainless Steel Element and a Magnetic Scrubber (**8KLBP-51-9A-300**).



Kidney Loop Cover Design

- The Industrial Cover can be manufactured out of fire resistant or retardant material.
- Customer can specify material (material choice will be reflected in quote).



8KLD-51-91

Dolly Cart Kidney Loop

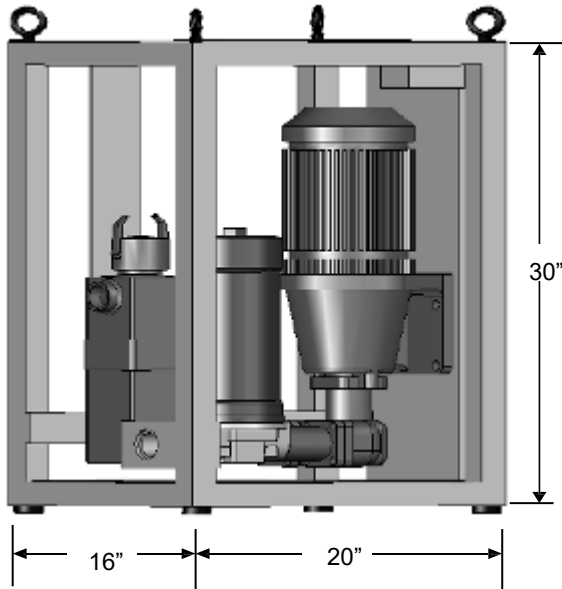
- Delivers a powerful Dual Magnetic Filtration Kidney Loop in a small portable dolly (hand truck) design.
- Easy deployment throughout facility.
- Easy to Implementation in the field.

Kidney Loops



Kidney Loop Example Specifications/Ordering

Ensure that the **OEI Kidney Loop Design Information Request Form** found online (www.oneeyeindustries.com) is completed and signed to accompany each quote request for an OEI Kidney Loop.



System Features:

- Positive Displacement Gear Pump
- 5 gpm (18.92 LPM) Viscosity 500 or 1,000 cSt
- OEI 5000 Series Magnetic Scrubber Removable
- Oil Spill / Drip Tray Sample Port
- On/Off Switch
- Electrical System International Requirements
- Mobile or Static

Options:

- OEI 5000 Series Scrubber 12"(30.48cm) or 24"(60.96cm)Height
- ADD-Vantage 9000 filter 12"(30.48cm) or 24"(60.96cm) Height
(reusable filter element and magnetic filter)
- Instrument Gauge Panel
- Pneumatic Pump
- Quick Connection Fittings
- Filter mount for water extraction filter
- Fluid flow gauge
- Flow Switch Particle Counter Wheels
- Ball Valve
- Customer preferred pump & motor



ONE EYE INDUSTRIES
The Leader in Industrial Magnetic Filtration

Kidney Loop Design Information Request Form

Please complete this form with the customer before requesting a quote.

Production Time: 8 – 10 weeks production time, ready for shipping. Please note that production time can vary due to design requirements.

1 Application: Please check the appropriate application.

Hydraulic	
Fuel	
Gear Box	
Other	

Describe Other: _____

2 Reservoir Size

Gallons	
Liters	
Oil level (head Pressure)	(level of oil above the kidney loop)

3 Flow Rate

--



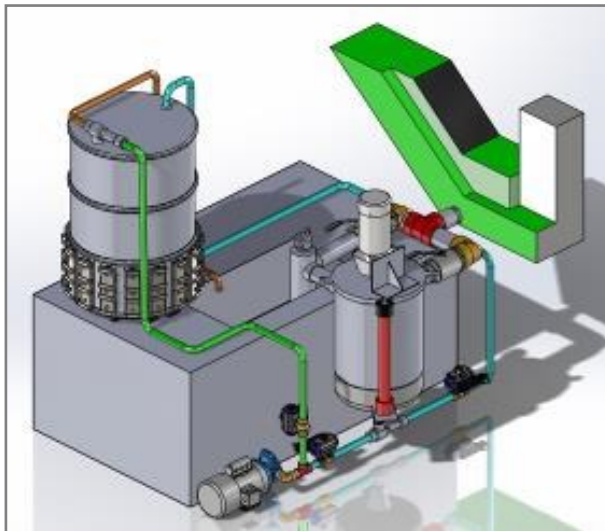
Cooling/Cutting

Milling Filtration System

In the milling industry, it is essential all manufacturing is precise to ensure a high quality product. Traditional filtration is unable to filter fine ferrous contamination at /or below submicron levels; this contamination results from the milling process and remains suspended in cutting fluid. OEI's Magnetic Filtration technology captures this damaging contaminant which reduces cooling and lubrication within the milling system, causing premature wear of the die and substandard product quality. Removal of the sub-micron iron particles reduces the opportunity of bacteria and algae growth.

Applications

Cutting Fluid/Coolant



Automated Cooling/Cutting Fluid Filtration System

8MFS-12-28-A

- This filtration system is designed to filter coolant and cutting fluids before returning it to the reservoir.
- The fully automated system is controlled by a PLC.

1. In the Dly operations of the filtration system, the fluid will flow through the vessel containing three 2"D (7.62cm) x 20"L (50.8cm). Designed with the option of rotating Magnetic Filter Rods to allow even distribution of contamination.
2. The fluid will then flow from the vessel through the second magnetic scrubber and into the reservoir.
3. An automated cleaning system will remove the trapped contamination from the Magnetic Filter Rods, which have a holding capacity in excess of 66lbs(30 kg).

Automated Filtration Systems

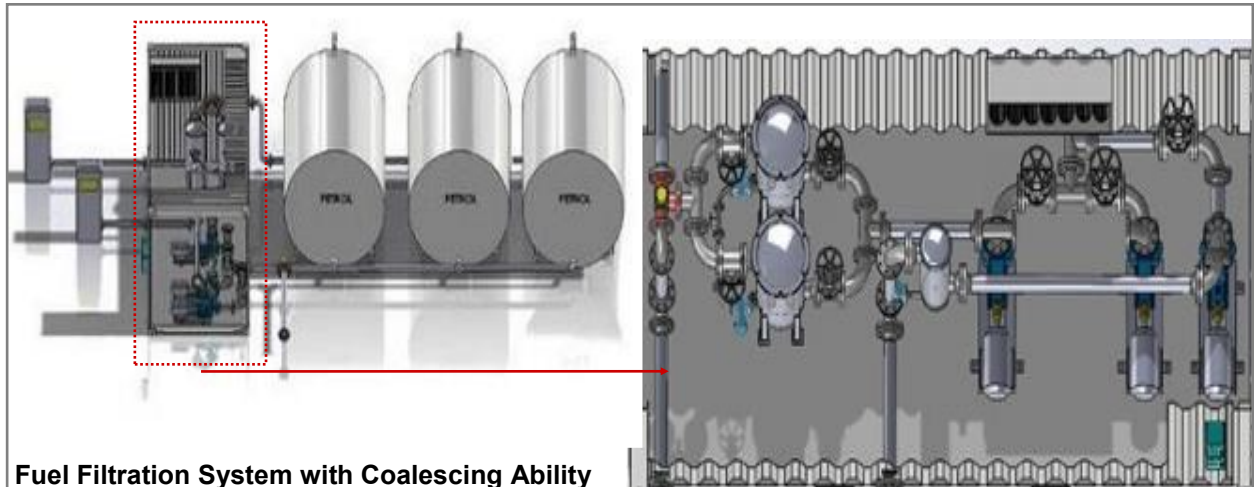


Fuel Filtration/Coalescing Systems

Designed as a portable, fully contained fuel filtration system.

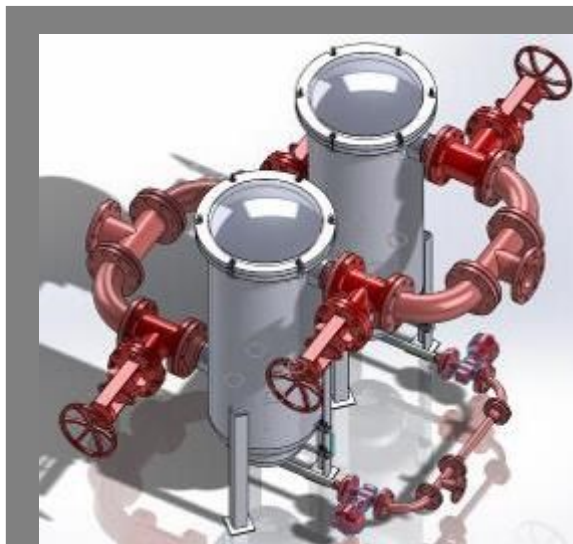
Applications

Bulk Fuel Filtration and Dispensing



Fuel Filtration System with Coalescing Ability

- For high flow, high volume up to 400gpm(1514lpm)
- Adjustable valves to control flow when unloading fuel
- Removes moisture to below ISO standard (500ppm(1514lpm))
- When in stand-by, the system operates as a kidney loop for continuous filtration



Fuel Coalescing System

5BCFD-##

- Manual cleaning
- High flow
- Automated

Fuel Coalescing Filter

5BCF-##

- Removes water from fuel while filtering contamination to submicron level





OEI Magnetic Filtration designs for food applications ensure the optimum quality of cleanliness as it removes iron and stainless contamination down to sub-micron levels in the production of liquids, water, pharmaceutical, processed, pre-processed foods and pharmaceuticals. The Magnetic Funnel Scrubber Series is fabricated with sanitary stainless steel for low pressure applications which are plumbed in-line with minimal flow restriction and employ three powerful magnetic filters for maximum contamination exposure. The Magnetic Filter Rods are easily removed for inspection and/or cleaning.

Applications

Pre-Processed Food · Processed Food · Liquid · Water · Pharmaceutical

4000 Series Magnetic Funnel Scrubbers

In the processing line, OEI Magnetic Funnel Scrubbers are ideal for removing contamination during operation. Designed for maximum protection of sanitary lines and process equipment.

- OEI magnetic filters have an operational life of 15+ years.
- Magnetic Holding Strength 270lbs/lft (401.8kg/m).
- Available in Industrial Grade (IG) and Food Grade (FG) SS304 or SS316.
- Removes iron and stainless contamination to submicron levels.
- Designed with a variety of sanitary connections for ease of installation and service.
- Designed for permanent installations.
- Ensures minimal flow restriction for maximum contamination exposure.
- Magnetic fields have full exposure to the product.
- Allows for inspection with removable OEI Magnetic Filter Rod.
- Cleans easily; flush clean, remove filter rod, and wipe clean.
- **Vessel does not need to be removed for cleaning.**

FG - Food Grade: 4FS42FGT

Food, Dry, Beverage, Pharmaceutical



IG - Industrial Grade: 4FS43IGW

Food, Plastic Pellets, Mineral Powders,
Glass Powder





Magnetic Funnel Scrubber Specifications

Magnetic Funnel Scrubber Filters					
	4200	4300	4400	4600	4800
Exterior Length	27" (68.58cm)	19.5" (49.53cm)	23.5" (56.69cm)	36" (91.44cm)	36" (91.44cm)
Outside Dimension	4"(10.16cm)	4"(10.16cm)	6"(15.24cm)	8"(20.32cm)	10"(25.4cm)
Inlet / Outlet Port	2"(5.08cm)	3"(7.62cm)	4"(10.16cm)	6"(15.24cm)	8"(20.32cm)
Magnetic Filter	L – 4 ¾ D – 1	L – 4 ¾ D – 1	L – 6 ¾ D – 1	L – 8 ¾ D – 1	L – 10 ¾ D – 1

Scrubber Housing	304 or 316 stainless sanitary steel as per order
Magnetic Filter Rod	316 Stainless Steel
Mounts	Horizontal or Vertical
Maximum Temperature	300°F
Vibration Resistant	Yes
Flow Pressure Maintained	Yes
Internal Bypassing	No
Easily Cleaned & Inspected	Yes, clean with a cloth
Installation	Welded in line with optional threaded adaptors
Magnetic Filter Access	Via – Sanitary SS Pin Clamp

How to Order Magnetic Funnel Scrubbers:

BOX 1	BOX 2	BOX 3	BOX 4	BOX 5
4FS	42	FG	T	V

BOX 1	
FUNNEL SCRUBBER	4FS

BOX 2	PIPE SIZE
41-1 1/2" (38mm)	44-4" (100mm)
42-2" (55mm)	46-6" (150mm)
43-3" (75mm)	48-8" (200mm)

BOX 3	USAGE
FG	PROCESSED FOOD
IG	PREPROCESSED FOOD AND MINERALS

BOX 4	INSTALLATION CONNECTION
T	TRI-CLAMPS
W	WELDLET

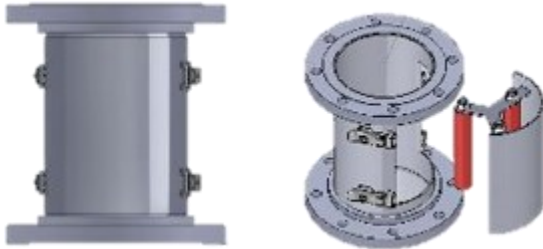
BOX 5	INSTALLATION MOUNT
H	HORIZONTAL
V	VERTICAL



Food and Industrial Application Filters

Industrial Grade Applications

Raw Products - Processed Products - Plastic Beads - Powdered Minerals



Vertical Draw Filter

- Substance can drop down through the filter, so the contamination is caught in the radial fields.



Horizontal Draw Filter

- Radial fields allow efficiency and eliminate opportunity for bridging.

The OEI Magnetic Filter Bar, Draw Filter and Wand

These are designed to meet the need for filtration throughout the conveyor and packaging process for solid or coarse foods. These magnetic filters are available in both food grade and industrial grade materials.



8FDG14X13

Magnetic Draw Filter

- Designed for dry powder transmission.
- Multiple magnetic fields cover the entire space.
- Removes contaminants from flour, rice, spices and other products.



4-3R2SQNC3834AJF

Magnetic Bar Filter

- Designed for installation on conveyor systems.



4-3R20FG

Magnetic Wand

- Wave over food as it is transported down conveyor belts.
- Indicates which products have been contaminated.
- Removes loose parts from conveyor.

Magnetic Rods



The OEI Magnetic Filter Rods employ powerful magnetic radial fields to capture both ferrous and non-ferrous contamination to sub-micron levels.

Applications

Reservoirs · Gearboxes · Filter Elements · Pipelines · More



- Designed for a variety of Magnetic Filter Rod sizes and fasteners.
- Compliments or replaces OEM filtration.
- Request OEM conversion rods.
- Manufactured with 304/316 Stainless Steel Tubing. (Monel and other Stainless grades available).
- User friendly.
- Easily cleaned.
- Extends service life (15+ years).

Magnetic Filter Protective Cage

- Designed for aid in the installation and removal of magnetic filtration rods.
- Supplied with all 31R and 32R Magnetic Filter Rods as a safety precaution due to filter strength.

Cage Policy

- Cages are a standard application for all 2"D(5.08cm) and 1 ½"D(3.81cm) Magnetic Filter Rods which are over 12"(30.48cm) in length.
- Magnetic Filter Rods which are 12"L(30.48cm) or less, can be purchased with a protective cage upon request.
- Cages can be custom designed for specific applications.

Magnetic Rods



Magnetic Filter Rod: How to Order

STANDARD MAGNETIC FILTER ROD DIAMETERS (INCHES)	STANDARD LENGTHS OF MAGNETIC FILTER ROD (INCHES)
1/2" (1.27cm)	3", 5", 9", 12" CUSTOM SIZES AVAILABLE, PLEASE CONTACT OEI FOR DETAILS
3/4" (1.9cm)	3", 6", 8", 12" CUSTOM SIZES AVAILABLE, PLEASE CONTACT OEI FOR DETAILS
1" (2.54cm)	3", 6", 8", 12", 18", 24", 36" CUSTOM SIZES AVAILABLE, PLEASE CONTACT OEI FOR DETAILS
1 1/2" (3.81cm)	CUSTOM SIZES AVAILABLE, PLEASE CONTACT OEI FOR DETAILS
2" (5.08cm)	CUSTOM SIZES AVAILABLE, PLEASE CONTACT OEI FOR DETAILS
ADDITIONAL VARIABLES	
TEMPERATURE	STANDARD MAGNETIC FILTERS (300F/150C) APPLICATIONS HIGH HEAT APPLICATIONS AVAILABLE (600F/300C)
APPLICATION OPTIONS	STATIONARY EQUIPMENT MOBILE EQUIPMENT FOOD GRADE (304SS) HIGH PRESSURE (150psi - 5000psi)

Custom Fastener Designs

FASTENER	
(UNC) NATION COURSE THREAD	(DS) DUAL STAND
(NPT) NATION PIPE THREAD	(CL) CAM-LOCK
(BSPP) BRITISH STANDARD PIPE PARALLEL	TEE
(BSPT) BRITISH STANDARD PIPE TAPERED	CUSTOM
(M) METRIC THREAD	
(ORB) O-RING BOSS	(IT) INTERNAL THREAD
(MB) MAGNETIC BASE	(CS) CIRCULAR SUPPORT
(MBA) MAGNETIC BASE ADJUSTABLE	

Magnetic Plugs



OEI manufactures plugs designed to replace the OEM industry standard ceramic magnetic plugs.

Applications

Final Drives · Rear Ends · Transfer Cases · Transmissions · Gear Boxes · Differentials · Fill Plugs

- Capture ferrous and non-ferrous contamination from oil.
- Predictive maintenance tool to identify problems before failure occurs in equipment or systems.
- Manufactured using strong rare earth magnets which are encased in nickel chromium, eliminating degradation. (Standard OEM plugs are manufactured using low grade ceramic magnets which degrade due to heat and vibration, creating even more contaminate).
- Standard operating temperature of 300F(150C).

Seal types for ORB (SAE), BSPP, NPT, BSPT and Metric Plugs



NPT



Recessed O-Ring



Bonded Seal



Standard O-Ring

Predictive Maintenance

OEI's magnetic plugs offer its customers a cost affect tool of predictive maintenance which is invaluable as it reduces downtime costs and component replacement costs.



NORMAL WEAR



CAUTION!



IMMINENT FAILURE!!

Magnetic Plugs



Magnetic Filter Plug: How to Order

BOX 1	BOX 2	BOX 3	BOX 4	BOX 5	BOX 6	BOX 7
7P		M	16	15	EH	

BOX 1	MAGNETIC PLUG
7P	PLUG

BOX 2	TEMPERATURE
Blank	300F/150C
HH	600F/300C

BOX 3	FASTENER
NPT	NATIONAL PIPE THREAD
BSPP	BRITISH STANDARD PIPE PARALLEL
BSPT	BRITISH STANDARD PIPE TAPERED
M	METRIC THREAD
ORB	O-RING BOSS

BOX 5
METRIC THREAD
1.0
1.25
1.5
2.0

BOX 4	PLUG SIZES AND TYPES	BOX 4	PLUG SIZES AND TYPES	BOX 4	PLUG SIZES AND TYPES
	INCHES NPT,BSP		METRIC SIZES		ORB SIZES
18	1/8"	10	10mm	-04	04
14	1/4"	12	12mm	-05	05
38	3/8"	14	14mm	-06	06
12	1/2"	16	16mm	-08	08
34	3/4"	18	18mm	-10	10
1	1"	20	20mm	-12	12
114	1 1/4"	22	22mm	-14	14
112	1 1/2"	26	26mm	-16	16
2	2"	27	27mm	-20	20
212	2 1/2"	30	30mm	-24	24
		33	33mm	-32	32

BOX 6	FASTENER TOOL
IS	INTERNAL SQUARE
ES	EXTERNAL SQUARE
IH	INTERNAL HEX
EH	EXTERNAL HEX
ESD	EXTERNAL SQUARE DRILLED

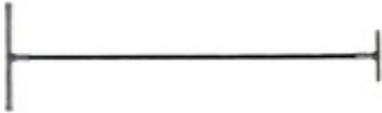
BOX 7	SEAL TYPE
BLANK	STANDARD O-RING
RO	RECESSED O-RING
BS	BONDED SEAL (HARD WASHER)



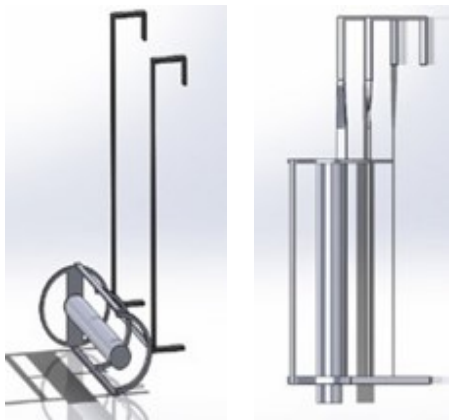
Industrial Application Magnetic Filters

25R14TH36

Magnetic Sweeper



- Available in three sizes (including hand-held).
- Removes ferrous fillings and grindings from storage reservoirs and CNC milling machine reservoirs.
- Because of flexible fiberglass handle it allows for reaching under and around equipment.
- Cleans new hydraulic and lube oil reservoirs.



8K3R216MLFT

Mud Mag

- Designed as magnetic trap in all open mud tanks for mud logging on offshore and onshore drilling rigs.
- Available vertical and horizontal.
- Light weight for easy handling.
- Includes a collection bag.

Cam-Lock Fastener



NPT Fastener

Pump Jacks

- Designed for Pump Jack gearboxes.
- OEI Magnetic Filter Rods are installed in the splash oil area.
- OEI Magnetic Filter Rods attach using NPT or Cam-Lock (optional self locking) fastener.



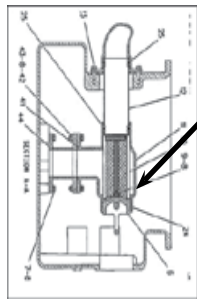
Custom Filtration Designs

One Eye Industries designs custom Magnetic Filters to fit heavy equipment applications.



25RCAT-9P5925

- CAT Transmission Plate Filter Enhancement Designed to increase filtration capability to submicron levels.



C3500 Series: 25RCAT-1W1564

C175 Series: 25RC12C412

CAT Sump Filter Enhancement

- Designed to be installed in the 3500 Series and C175 engine sump screen filter(1W-1564 and 364-8521).



OEI MF



CAT MF

25RCAT-7160 (w/ 3S-3439 Plate)

25RCAT-3251 (w/ 8P-3251 Plate)

CAT Transmission Replacement Filter

- Designed to replace ceramic OEM magnetic filtration.



16H,G,M: 3R20HD78PL

24H,G,M: 3R24HD78PL

CAT Motor Grade Chain Case

Magnetic Filtration System

- Installs on 16H,G,M and 24H,G,M.
- Order plates separately as well for custom order.



Custom Filtration Designs

One Eye Industries has designed several custom Magnetic Filters to fit heavy equipment applications.



7PKOM0086

Wheel Motor Plug

- Redesigned to include 4 divots in the interior to lock into a 3/4" ratchet or extension drive.
- Eliminates ratchets from slipping or popping off.
- 1 1/4" NPT.



25RFC787

Magnetic Filter/Level Monitor

- Filters contaminate from the Komatsu 830E or GE 787 wheel motors.
- Acts as a level monitor for oil.
- Filters contamination to sub-micron levels.
- Identifies premature wear patterns and acts as a predictive maintenance tool.

Replaced Filter



2PKOM-79573

Hydraulic Return Filter: Komatsu PC3000 through PC8000

- Designed OEI Magnetic Filter Rod to replace the steel OEM Rod.
- Increases filtration capability to sub-micron levels.
- Enhances hydraulic fluid cleanliness.
- Increases reliability by extending fluid and component life.



2RNC3810T3

Hydraulic Filter Enhancement

- OEI Magnetic Filter Rod to be installed in the Komatsu PC1250-PC2000.
- OEI reusable Stainless Steel Element 9ELSS77532x25 replaces the Komatsu 209-60-77531 disposable element.

Custom OEM Designs



Custom Filtration Designs

One Eye Industries designs custom Magnetic Filters for installation in OEM and aftermarket traditional filter housings, improving their ability to remove contamination to sub-micron levels.

Application Custom OEM



Example OEM filtration fitted with OEI Magnetic Filter Rods

OEM	FILTER	EX. OEI PART NUMBER
Pall	Marksman Series	3RT12PALLT1865
Pall	HF Series	3RT20PALLHF
Guardian	Guardian GT4	2RNC384TH
ModuFlow	IL2R2CF2	2RMFP7
BGT	1210QLBGEF2321	3RPBGT12
BGT	11	3RPBGT11
RF72	Original RF72	25RF72
PTI	F2P-120 Series	23C1212C134
Schroeder	LF15-16 OR 39	25RT14T312
Stauff	SF300	2RC23C134
Schroeder K9	1K	2RC7C112
Schroeder K9	2K	2RC1C112
Schroeder KL3	1K	2RC7C112
Schroeder KL3	2K	2RC16C112
Schroeder RTI	K1	2RC614C112
Schroeder RTI	KK1	2RC15C112
Schroeder CTF60	CTF60 Housing	2R##T1

2RSCHK2



Magnetic Rods and Plugs



Cross Over Ordering

For all Magnetic Filter Rod orders, please refer to our online interactive order form or contact our office for all inquiries and shipping information.

OEM Part #	Magnetic Filter Plugs & Magnetic Filter Rods	OEI Part Number
ATLAS COPCO		
5541 506500	ST 1520 Scoop Truck	7PM3320EH
Custom	ST 8B - Scoop Truck Hydraulic Tank	3R24HDAC2ES
BUCYRUS/CAT EXCAVATOR		
2764322	RH170 & 340	7PM4215IHBS
536566	RH400	7PM4820IHBS
CAT		
1W-1564	Magnetic Filter for Engine Sump Filter (1W-1564) 3/4" x 6"L Circular Support	25RCAT-1W1564
2A-3852	Magnetic Plug - 777 Final Drive/ Planetary, 16-H Grader Chain Case, 789 / 793 Front Wheel Cover, 621 B Final Drive	7PCAT-3837
2A-3852	Custom Design - 4"long x 1/2" diameter - Magnetic filter on a 2A-3852	25RCAT-3852
2H-3865	Magnetic Drain Plug Inside Square	7PCAT-2H3865
3E-2338	For: 854G Rubber Dozer Engine, 5130B Excavator, 789 Cat Haul Truck Transmission, 793 Cat Haul Truck Transmission, 330 Excavator Final Drive, 621F Cat Scraper Final Drive Plug, 345 Excavator Final Drive, 375 Excavator	7PCAT-3E2338
3G-2815	Magnetic Filter Stud for CAT Filter 3/4"d x 24.4"L (3/4"-10 unc & 1/2" -13 2b thread	25RCAT-3G2815
3H-4190	793D Haul Truck Drive Pumps Drain Plug	7PCAT-3H4190
4B-2363	For: CAT 245 Excavator Sump Final Drive	7PCAT-2363
4D-7678	CAT 16H, G, M - Motor Grader Chain Case Inspection Plate	1PCAT-4D7678
4T-2069	D10 Pivot Shaft Fill & Drain Plug	7PCAT-2069
5F-0304	5/8-18 Thread EH	7PCAT-5F0304
5K-7696	Wheel Loader Final Drive & Brake 988,992,836,B35C	7PCAT-7696
5P-8005	621F Scraper Transmission Housing Plug	7PCAT-8005
5P-8006	621F Scraper Transmission Housing Plug	7PCAT-8006
5P-4484	For: 854 R.T. Dozer Differential, 834 R.T. Dozer Differential, 988, 992 Differentials	7PCAT-4484
5P-8144	For: D-10 Transmission & Final Drive, D 9L, D-10 Transmission, D-IIR Final Drive, D-IIN Final Drive, 793 Rear Axle Drain, 797 Differential & Final Drive	3RCAT-8334
6B-5262	777 Final Drive/ Planetary, 16-H Grader Chain Case, 789 / 793 Front Wheel Cover, 621 B Final Drive	7PCAT-3837
6E-5047	For: 140H Grader Tandem Drive Plug -08 IH	7PCAT-5047
6V-0439	For: 789 Cat Truck Final Drive, 854-G R.T Dozer Final Drive, 992 Wheel Loader	7PCAT-0439
6V-3298	For: D-8 Transmission & Final Drive, D 9L, D-10 Transmission, D-IIR Final Drive, D-IIN Final Drive, 793 Rear Axle Drain, 797 Differential & Final Drive	3RCAT-8334
6V-3963	For: D6 Final Drive & Differential Drive, 793 Final Drive	3RCAT-3963
7J-5586	Torque converter Bolt 3/4"D x 21 3/4"L Magnetic Bolt hex head and bolt thread	25RCAT-7J5586
8B-6599	For: 637 Cat Scraper Transmission Plug	7PCAT-6599
8M-3837	777 Final Drive/ Planetary, 16-H Grader Chain Case, 789C / 793CD Front Wheel Cover, 621 B Final Drive 785C, 988H, G	7PCAT-3837

Magnetic Rods and Plugs



Cross Over Ordering

CAT		
8M-3837	777 Final Drive/ Planetary, 16-H Grader Chain Case, 789C / 793CD Front Wheel Cover, 621 B Final Drive 785C, 988H, G	7PCAT-3837
8M-5576	For: 24-H Grader Differential, 789 Cat Truck Rear Axle Housing, 793 Cat Truck Rear Axle Housing 777 Cat Truck Rear Axle Housing, 785 Cat Truck Rear Axle Housing	7PCAT-5576
8M-7160	Magnetic Filter For Transmission (3/4" x 9" w/ Plate (3S3439)	25RCAT-7160
8P-1722	CAT# 8P-1722 or 8P-3251 3/4"d x 9"L magnetic filter mounted to plate with O-ring	25RCAT-3251
8P-3251	CAT# 8P-1722 or 8P-3251 3/4"d x 9"L magnetic filter mounted to plate with O-ring	25RCAT-3251
8T-6332	Magnetic plug 793F	7PORB10IS
8M-2782D	For: Twin Disc Transmission - 345 Final Drive	7PCAT-2782D
9J-7031	For: D-IIR Hydraulic Tank Drain and Engine, D-IIN Hydraulic Tank Drain and Engine, 621F Cat Scraper Final Drive, 24-H Hydraulic Grader, 854-G R.Tire Hydraulic Dozer	7PCAT-7031
9S-4181	For: 854G Rubber Dozer Engine, 5130B Excavator, 789 Cat Haul Truck Transmission, 793 Cat Haul Truck Trans, 330 Excavator Final Drive, 621F Cat Scraper Final Drive Plug, 345 Excavator Final Drive, 375 Excavator,D10	7PCAT-4181
9S-4182	For: D-10R Hydraulics, D-10N Hydraulics, D10T	7PCAT-4182
9S-4183	For: 854G R.T. Dozer Engine, 5130B Excavator Engine	7PCAT-4183
9S-4185	D 10 Dozer Final Drive Drain Plug	7PCAT-4185
9S-4191	9/16-18 plug	7PCAT-8004
9S-4205	For 621E CAT Scraper	7PCAT-4205
9S-4208	For: 854G Rubber Dozer Engine, 5130B Excavator, 789 Cat Haul Truck Transmission, 793 Cat Haul Truck Transmission, 330 Excavator Final Drive, 621F Cat Scraper Final Drive Plug, 345 Excavator Final Drive, 375 Excavator	7PCAT-4208
9S-8004	For: 24-H Motor Grader - Tandem Housing	7PCAT-8004
9S-8006	For. CAT 5110 Excavator Sump Final Drive	7PCAT-9S8006
9S-8008	Magnetic Plug	7PCAT-8008
9S-8010	Magnetic Plug Internal Hex -20	7PCAT-8010
9X-6451	For: C-15 CAT Engine Pan Plug	7PC15EEH
109-5839	C27 engine drain plug	7PCAT-5839
240-8259	CAT # 240-8259 Plate 3/4"d x 7"L magnetic filter w/ Spring plate	25RCAT-8259
251-6673	CAT # 251-6673 Magnetic Filter transmission sump	25RCAT-6673
292-5641	CAT# 292-5641 or 388-3097 3/4"d x 8"L magnetic filter mounted to cover plate	25RCAT-3097
295-5897	For: 3516-B Engine Magnetic Filter for Engine Sump Filter (295-5897) 3/4" x 6" w/ 3/8"nc and 2.875 x 3/8" Support tee	25RCAT-1W1564
304-8032	For: M12 Tandem Drain Plug	7PCAT-8032
364-8521	C175 Engine Sump Screen Magnetic Filter	25RC12C412
388-3097	CAT# 292-5641 or 388-3097 3/4"d x 8"L magnetic filter mounted to cover plate	25RCAT-3097
432-8073	MT 4400 front axle drain 1/2" NPT IH	7PCAT-8073
434-5550	-10 ORB External Hex	7PORB10EH
106-8187	D10 Transmission Drain Plug	7PCAT-8187
175-6689	For: 24-H Grader Differential, 789 Cat Truck Rear Axle Housing, 793 Cat Truck Rear Axle Housing 777 Cat Truck Rear Axle Housing, 785 Cat Truck Rear Axle Housing	7PCAT-5576
377-9588	Magnetic plug - 793F Haul Truck	7PM1215IH
Custom	CAT 12H, 12M,a20M,140H,140M, 140M2, 160M2 Grader Chain Case Magnetic Filter	25R16HD78
Custom	CAT 143H, 163H, 160M, Grader Chain Case Magnetic Filter	25R18HD78
Custom	CAT 14H, 14M Grader Chain Case Magnetic Filter	25R20HD78

Magnetic Rods and Plugs



Cross Over Ordering

CAT		
Custom	CAT 16-H, G, M Grader Chain Case Magnetic Filter "Includes stainless steel half coupler for 2" NPT Plug"	3R20HD78
Custom	CAT 24-H, G, M Grader Chain Case Magnetic Filter "Includes stainless steel half coupler for 2" NPT Plug"	3R24HD78
Custom	CAT 16-H, G, M Grader Chain Case Magnetic Filter "Includes modified inspection for Magnetic Filter"	3R20HD78PL
Custom	CAT 24-H, G, M Grader Chain Case Magnetic Filter "Includes modified inspection for Magnetic Filter"	3R24HD78PL
Custom	CAT D-8,D-9,D-10,D-11 Hydraulic Reservoir Magnetic Filter w/ Cam-Lock Mount	3RCL18HD
P & H		
Custom	P&H 2800 Shovel Crowd Case "Includes stainless steel half coupler for 2" NPT external hex head"	3R18HD78
Custom	P&H 2300 Propel Gear Box Upper Location " Cam Lock Mount 24" Total Length, 20 " Magnetic Filter	3RCL20HDCU4
Custom	P&H 2300 Propel Gear Box Lower Location " Cam Lock Mount 28" Total Length 12" Magnetic Filter	3RCL12HDCU16
KOMASTU		
Custom	KOMATSU 830E Hydraulic Tank Cap # TP 0623 with 24" Magnetic Filter	3RORB3224IH
Custom	GE 787 Wheel Drive Filler Cap with (Sample Port / Dip Stick and Magnetic Filter.) (GE#41B538253P1)	2RFCS787
Custom	GE 787 Wheel Drive Filler Cap with (1/4 or 5/16" Sample Port Dip Stick and Magnetic Filter.)	2RFCS787-2
Custom	GE 787 Wheel Drive Filler Cap with (1/2" Sample Port Dip Stick and Magnetic Filter	2RFCS787-12
Custom	GE 787 Wheel Drive Long Filler Cap with (1/2" Sample Port Dip Stick and Magnetic Filter.)	2RFCS787-127
Custom	GE 787 Wheel Motor Filler Cap With Magnetic Filter 6" in Length (GE#41B538253P1)	25RFC787
Custom	PC3000 - PC8000 Komatsu Hydraulic Return filter Magnetic Filter	2RKOM-79573
07044-12412	830E Plug # 12412	7PM2415EH
07044-13620	Komatsu Plug # 31420, #13620	7PM3615EH
07044-31420	Komatsu Plug # 31420, #13620	7PM3615EH
H6881	830E Front Spindle Plug # H6881	7PNPT1IS
GE-0086	GE AC Wheel drive	7PKOM-0086
R2491	Magnetic Plug	7PKOM2491
SF 9435	830E For: Haul Truck Wheel Drive Reservoir Plug	2RNPT1149ES
TY 8879	930E Front Spindle Plug #	7PKOM8879
VJ 6489	830E Haul Truck Upper Wheel Drive Plug #VJ 6489	7PNPT114ES
VM0315	Magnetic Plug Steering System	7PKOM-0315
VM0317	Magnetic Plug Front Brake, Wet Disc Rear	7PKOM-0317
VS 8411	VS 8411 Komatsu Wheel Drive Plug 42mm x 2.0 Magnetic Plug	7PM4220IH
WB1199	Magnetic Plug Spindle Hub, Brake Assembly	7PKOM1199
209-60-77532	Hydraulic Element Filter For: PC1250	9ELSS77532x25
21N-60-12210	Hydraulic Spin on Filter For: PC1250	9ADV9-9377

Magnetic Rods and Plugs



Cross Over Ordering

Letourneau		
200-0002	Letourneau 200-0002 For: 1850 Final Drive	7PLET5262
Liebherr		
409710601	Liebherr T282 Haul Truck Plug Part # 409710601, 984C Final Drive	7PM3320EH
	Liebherr 380 For: Ton Wheel Drive Haul Truck	7PORB16IH
	Reclaimer Plug Long Travel Gear Box 42mm x 2.0 Magnetic Plug	7PM4220IH
	SISU 98073 For: Final Drive (Western Star Haul Truck), 793/789	7PORBSISU72
	SISU Differential (Western Star Haul Truck) 793/789	7PORBSISUH75
10336-F	Front Wheel Brake Assembly Plug	2RLBR10336F
Cummins		
32822	QSB 6.7 Magnetic Plug	7PM2215ESBS
367-8605	QSK 60 Magnetic Plug	7PM2720IH
John Deere		
R26727	John Deer R26727 For: G Series Back Hoe Axle Differential MT-2075, 310-G, 210-LE	2RORB5727
Hitachi		
4462824	EX1200-5 magnetic plug	7PNPT1IH
94-2013	EX2500	7PBSPT12IH
94-2014	EX2500	7PBSPT34IH
94-2015	EX3600	7PBSPT1IH
	5500 Loader Final Drive	7PHITC114
9134114	EH4000 Final Drive	7PBSPP1IH
Ford New Holland		
9848947	Rear Differential Drain Plug	7PFD-8947
HyunD		
	Loader HL770-7	7PM2215IS
Sandvik		
	LH621 Wheel End Differential	7PSVK-9842
001003-007	Magnetic Drain Plug	7PNPT12IH
001548-003	Magnetic Drain Plug	7PNPT14IH
001548-005	Magnetic Drain Plug	7PNPT12IH
55053629	Magnetic Drain Plug	7PM2215IS

Magnetic Filter Pads



Magnetic Filter Pad

Applications

Engines · Diesel Fuel · Oil · Gas

- Attaches to existing disposable filters.
- Removes hard metals and reduces wear on softer components by using multiple magnetic fields.
- Extends operational life of lube oil, hydraulic fluids, coolant fluids, and equipment.
- Filters ferrous and non-ferrous contamination to submicron levels.



BT500

For disposable filters up to 3" (7.62cm)D

- Small transmissions, rear end disposable filters, small fuel filters, marine vehicles and recreation vehicles.

BT800

For disposable filters 3" (7.62cm)-4" (10.16cm)D

- Fuel, engine oil, hydraulic, coolant and transmission filters.

BT900

For disposable filters 4" (10.16cm)D and up

- Fuel, engine oil, hydraulic, coolant and transmission filters.

OEI Magnetic Filter Pad: How to Order

OEI Part Number	Magnetic Filter Pad Description
1MPBT500	MAGNETIC PAD 2- 3/8"(6.03cm)W x 2-3/8"(6.03cm) L x 1/4"(.63cm)T
1MPBT800	MAGNETIC PAD 3"(7.62cm)W x 6"(15.24cm)L x 1/4"(.63cm)T
1MPBT900	MAGNETIC PAD 4"(10.16cm)W x 6"(15.24cm)L x 3/8"(.95cm) T



Magnetic Filter Pads



Magnetic Patch

Applications

Piping · Silos · Drop Chutes · Conveyors

- A quick, secure way to repair holes in steel pipe, round radius elbows, flat back elbows and silos.
- Easily installed and removed during scheduled downtime.
- Ideal for liquid and solid applications.
- Available in three sizes and trimmable to accommodate smaller holes and pipes.



OEI Magnetic Filter Patch: How to Order

OEI PART NUMBER	MAGNETIC FILTER PATCH DESCRIPTION
1MP813	MAGNETIC PAD 8"(20.32cm)W x 13"(33.02cm)L x 3/8"(.95cm)T
1MP1713	MAGNETIC PAD 17"(43.18cm)W x 13"(33.02cm)L x 3/8"(.95cm)T



Oil & Gas Service Equipment Kits

OEI has developed custom kits for specific engines and equipment to provide a list of all parts needed to maintain the highest level of fluid cleanliness on all rotating equipment.

Applications

Lube Oil · Engine · Fuel Spin-On · Coolant · Transmission · Planetary · Torque Convertors · Lube Tank · Fan Drive · Lube Circuit · Webasto · Hydraulics · HPU Hydraulics · Vapo Fuel · Glycol · Hydraulic Return Filter · Elements

OEI Example Kit for Frac Trucks with a CAT 3512C Engine & TH55-E70

Application	OEM Part	OEI Part
Lube Oil	275-2604	9ADV9-4005
Engine Sump	-	25RCAT-1W1564
Fuel Spin-On	1R0755	9ADV9-0755
Coolant	-	5SY3BRB
Transmission	1R-1809-328-3655	2RC8C134
Planetary	-	7PCAT-4181
Torq. Conv.	130-6747	25RCAT3097
Lube Tank	-	5SCBTM12SORB
Fan Drive	-	5SC0M12SCLNPT1

Oil and Gas Example Kits

General Kits

CAT 3126 Engine

Allison 8610 Transmission

Frac Truck Kit

CAT 3512C Engine & TH55-E70

Twin Pumper Kit

CAT C18 Engine 800HP

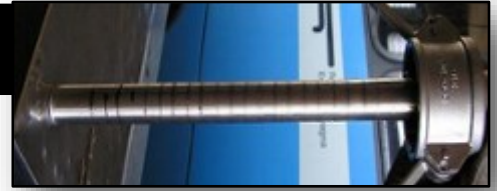
Coil Tubing Unit Kit

Cummins ISX 15 Engine

N2 Pumper Kits

Cummins QSL9 Engine

Detroit MTU 2000 Engine



Fleet and Transport Truck Kits

All kits are custom built to suit your needs; it is our suggestion to purchase all parts in each kit to maintain the highest level of fluid cleanliness for your equipment. Please contact the OEI office for the full list of parts required for your application.

Application

Coolant · Fuel · Hydraulics · Engine Oil · Rear Differential · Transmission · Power Steering · Differential Fill · Differential Drain · Transmission · Webasto · Banjo Y-Strainer

Example Kit for Combo Vac Cummins Engine

Application	OEM Part	OEI Part
Coolant	-	5SY3BRB
Fuel	-	BT900
Hydraulics	F5011-01C	BT900
Engine Oil	LF9080	9ADV9-9024
Rear Differential	1 1/16"-12 ORB Plug	7PORB12IH
Transmission	3/4" NPT Plug	7PNPT34IH
Power Steering	-	BT900

Fleet and Transport Truck Kits

Class 5,6,7 PX9 with Allison

Class 5,6,7 PX7 with Allison

Class 8 ISX Cummins Power Unit with T880

Class 8 MX PACAR Power Unit

Cummins 15515.5 Engine

Combo Vac Cummins Engine



Custom Construction and Mining Equipment Kits

All kits are custom built to suit your needs, OEI suggests purchasing all the parts in each kit to maintain the highest level of cleanliness of all fluids in mining and construction equipment. Please contact our offices for any inquiries.

Application

**Dozers · Graders · Haul Trucks · Shovels · Drag Lines · Engine Oil · Engine Fuel ·
Hydraulics · Transmissions · Differentials · Torque Converters · Coolant**

OEI Example Kits for Mining Graders

CAT 16M

Application	OEM Part	OEI Part
Lube Oil	1R1808	9ADV9-4005
Hydraulic Spin-On	Up to S/N 7KK224 Filter # 4I-3950	9ADV9-1814
Hydraulics	Up to S/N 7KK224 Filter # 126-1814	9ADV9-1814
Hydraulics	S/N 7KK224 and higher Filter # 126-1814	9ELSS96008x25
Hydraulic Brake	133-0761	9ELSS96008x25
Hyd. Tank Element	1R0722	9ELSS72240
Transmission	13-8876,1R0741	9ELSS96008x25
Diff Lock Element	134-0964	9ELSS96008x25
Fuel Spin On	1R0749	9ADV9-1000
Fuel/Water Spin-On	133-5673	9ADV9-0373
Tandem Drive Plug	9S-8004	7PCAT-8004
Chain Case MF	Custom	(2)3R24HD78PL
Rear Axle Drain	8M-5576	7PCAT-5576
Mag Drain Plug	9X-2230	(4)7PCAT-4185
Transmission	6P-4903	25RCAT-6P4903

Custom Kits

For information on all kits, please contact our office.



Grader Kits

CAT 140H w/3176C
CAT 140H ES,
CAT 140H NA w/3306
CAT 14G w/3306
CAT 14H w/3176C
CAT 14H, 14H NA w/3306
CAT 14M w/C11
CAT 16H w/3196
CAT 16H
CAT 16H NA w/3406C
CAT 16M w/C13
CAT 24H w/3412E
CAT 24M w/C18
CAT 16G w/3406

Dozer Kits:

CAT 824H w/3406
CAT 834H w/C18
CAT 854G w/3508B
CAT 854K w/C32
CAT D7R, D7R LGP w/3306
CAT D11T w/C32
CAT D8 (S/N 1H, 2U, 13A)
CAT D9R w/3408
CAT D10N w/3412
CAT D10T w/C27
CAT D11R w/3508, 3508B

Excavator Kits:

CAT 235B, 235C, 235D w/3306
CAT 325,325L, 325LN w/3116
CAT 385C, 385C L w/C18
CAT 390D, 390D L w/C18

Front Loader Kits:

CAT 908 w/3404C
CAT 914G w/3054T
CAT 930G w/3056E
CAT 930H w/C6.6
CAT 950H Wheel Loader w/C7
CAT 962K Wheel Loader w/C7.1
CAT 966F w/3306
CAT 966F Series II w/3306
CAT 966H Wheel Loader w/ C11
CAT 980C w/3406
CAT 980F/980F
Series II w/3406C
CAT 988F w/3408
CAT 988F Series II w/3408E
CAT 988G Wheel Loader w/3456
CAT 988H Wheel Loader w/C18
CAT 992D w/3412
CAT992G w/3508B
CAT 992K w/C32 (S/N 880, ZMX)
CAT 993K w/C32
CAT 994D w/3516
CAT 994F w/3516B
CAT IT28, IT28B w/3204
CAT IT28G w/3056E

Haul Truck Kits:

CAT 730 Articulated w/C11 Engine
CAT 730 Articulated w/3196C
Engine
CAT 740, 740E Ejector
Articulated w C15 Engine
CAT 740, 740E
Ejector Articulated w/3406E Engine
CAT 773B w/3412 Engine
CAT 773E w/3412E Engine
CAT 777 w/D348 Engine
CAT 777A
CAT 777B w/3508 Engine
CAT 77C w/3508 Engine
CAT 777D w/3508B Engine
CAT 777D w/3512B Engine
CAT 777F w/C32 Engine
CAT 785B w/3512 Engine
CAT 785C w/3512B Engine
CAT 785C w/3516B Engine
CAT 785D w/3512B Engine
CAT 789 w/3516 Engine
CAT 789B w/3516 Engine
CAT 789C w/3156B Engine
CAT 793 w/3516 Engine
CAT 793B w/3516 Engine
CAT 793C w/3516B Engine
CAT 793D w/3516B Engine



The Leader in Industrial Magnetic Filtration

Case Study

LPG Mechanical Pump Seal
Houston Refining Company
Texas, 2016

Problem:



The crude oil entering the refinery in the LPG stream is contaminated, damaging the mechanical seal face on the process pump. Over time, the entire inboard seal system will be compromised as it will coat the inside of the exchanger coil, causing a loss of efficiency in temperature exchange. It seizes the seal gap components and compromises the mechanical seal faces.

Solution:

Install a 1" Magnetic Y-Separator on the seal flush to identify the volume of contamination in the flow and to show how efficient OEI Magnetic Separator technology is in removing and preventing damage to mechanical seals and associated components.



Results:

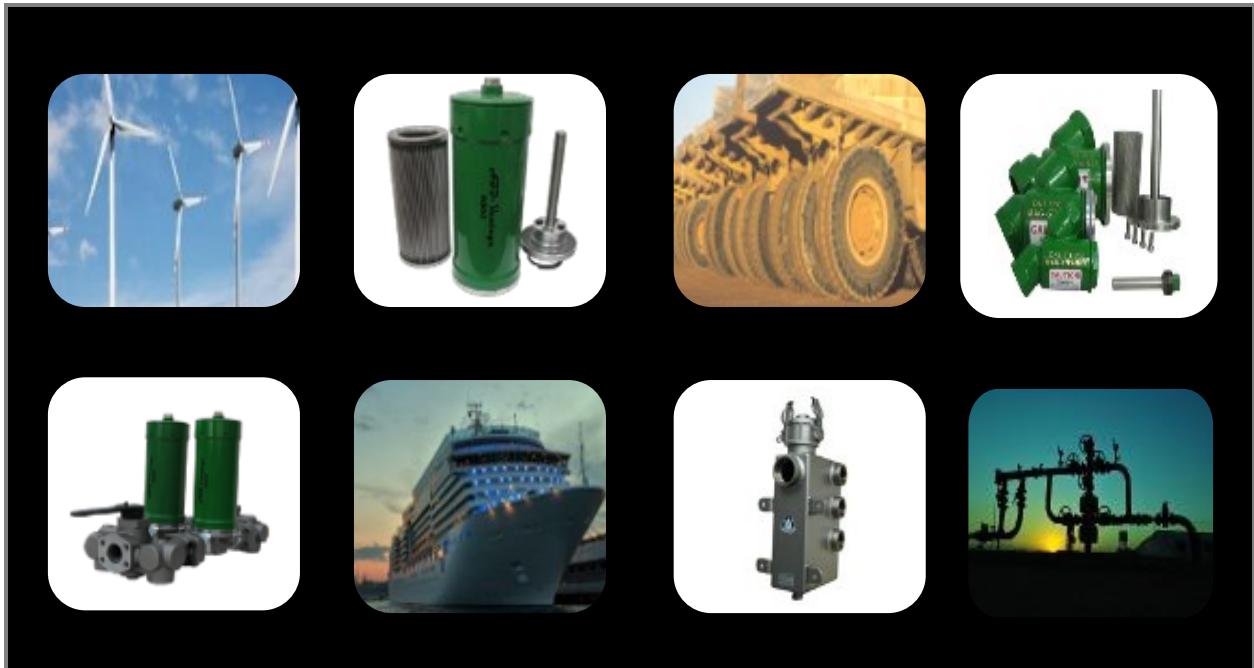
After 10 days of operation, the Magnetic Separator Rod removed an excessive amount of contamination thereby identifying the volume of contamination in the flow.

Conclusion:

Matthew Caster, Senior Production Engineer notes that OEI technology **“offers us a solution quickly - it is easy to install and easy to service for cleaning. The OEI technology is almost magical.”** This OEI Y-Strainer will extend the seal life, protect the exchanger coil, reduce efficiency loss in the temperature exchange and decrease the opportunity to seize the seal gap components.

Recommendation:

Install OEI technology on the inlet pipe to the refinery and before every product pump and seal flush system to reduce the volume of contamination throughout the system and protect all equipment and components.



THE LEADER IN INDUSTRIAL MAGNETIC FILTRATION

**MANUFACTURING · MINING · MARINE
OIL & GAS FOOD · PHARMACEUTICALS
WIND · FORESTRY · FLEET
REDUCE YOUR ENVIROMENTAL FOOTPRINT**

www.OneEyeIndustries.com
Calgary, Alberta
Canada
1 403. 242. 4221
quotes@oneeyeindustries.com

